



**CHANGE IS
COMING TO IAH**

**NEW TERMINAL
IN THE MAKING**



IAH Terminal Redevelopment Program Update

Economic Development Committee Meeting

November 15th , 2023



Contents

1. ITRP Overview
2. International Terminal - North Terminal Concourse Construction Photos
3. International Terminal - Central Processor Construction Photos
4. International Terminal – Enabling Projects
5. ITRP Upcoming Council Actions



1. IAH Terminal Redevelopment Program (ITRP) Overview

IAH Terminal Redevelopment Program (ITRP) - Scope Overview

New C North (NCN)
Concourse – Apron & Utilities
Project - **COMPLETED**



International Terminal –
North Concourse
Project



Infrastructure Division
Office (PMO) Building
Project - **COMPLETED**



IAH Regional Detention
Pond Project - **COMPLETED**



International Terminal –
C-Parking Garage Expansion

International Terminal –
Central Processor & Federal Inspection Service
Project

Enabling Utilities – Landside
Project

Radio Intermediate
Distribution Frame (RIDF)
Relocation Project -
COMPLETED



IAH Terminal Redevelopment Program (ITRP) – Milestone Overview

Budget - \$1.43 Billion
Substantial Completion - Q4 2024

| KEY PROGRAM ACTIVITIES | FORECAST ARRIVALS | STATUS |
|--|-------------------|---------|
| New C North Pier Opening | Mar 2017 | LANDED |
| HAS Infrastructure Division (PMO Building) Operational | Apr 2019 | LANDED |
| United Airlines Vacate Old C-North Pier | Jul 2019 | LANDED |
| Old C-North Pier Abatement & Demolition Activities Commence | Oct 2019 | LANDED |
| International Terminal Concept Design Complete | Oct 2019 | LANDED |
| New Pier Construction Commences | Oct 2019 | LANDED |
| D/E Parking Garage Closes for Demolition | Mar 2021 | LANDED |
| International Terminal and Central Processor Contract GMP (MLIT & FIS) | Nov 2021 | LANDED |
| International Terminal North Concourse Refurbishment Complete | Nov 2023 | ON TIME |
| New Pier Operational | Q1 2024 | ON TIME |
| New Parking Levels Complete | Jan 2024 | ON TIME |
| International Terminal Central Processor – Opening | Q4 2024 | ON TIME |
| Foreign Flag Airlines Transition/Relocation from Terminal D to New ICP | Q1 2025 | ON TIME |

International Terminal Is Open for Business

1. International Terminal D Complex – Fall 2023

- All new finishes and fixtures
- New flooring, LED lighting and ceiling tiles
- State of the art air filtration
- New furniture, seating and gate counters

2. New International Concourse and Gates – Spring 2024

- Designed to LEED Silver Equivalent
- New furniture, seating and gate counters
- State of the art air filtration
- Bright and airy spaces filled
- Immersive art installations

3. New International Central Processor - Winter 2024

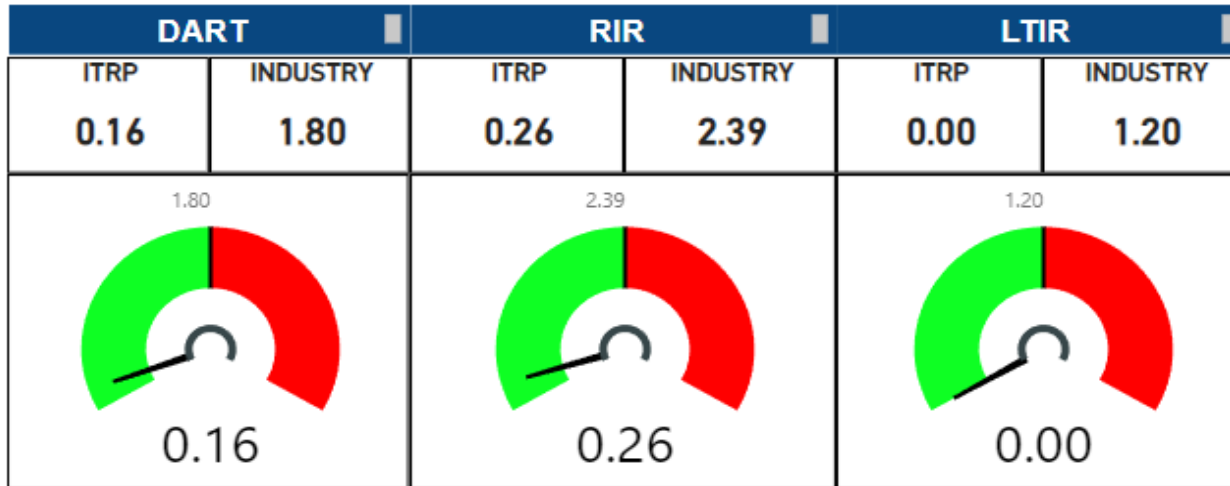
- Designed to LEED Silver Equivalent
- New state of the art ticketing hall and self-service technologies
- 17 lane screening lane checkpoint
- Oculus feature
- New open concept ticketing and arrivals level halls
- State of the art air filtration
- Immersive art installations

Program Safety

ITRP HEALTH & SAFETY SUMMARY

3,781,887

MH PTD

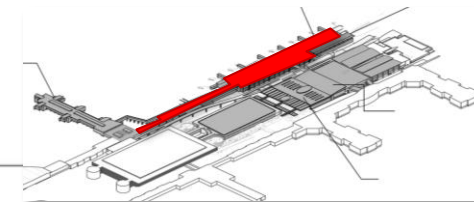


- The overall program has logged more than 3.7 Million-hours to date.
- Both Contractors have reached Million-hour milestones without lost time injuries.
- FIS Project celebrated Million-hour event on November 03, 2023.

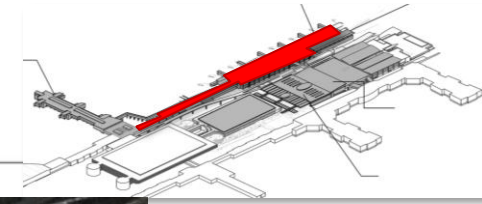


2. International Terminal D Complex

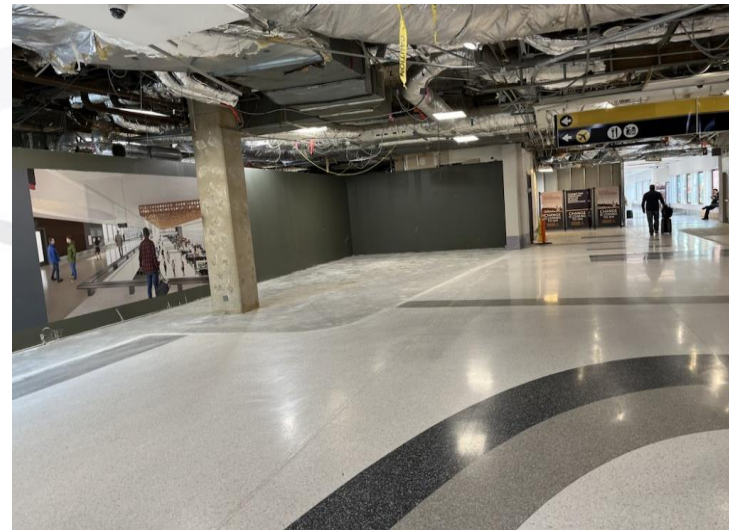
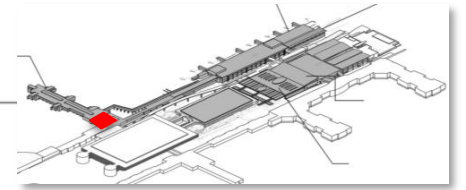
International Terminal – Terminal D Refurbishment



International Terminal – Terminal D Refurbishment



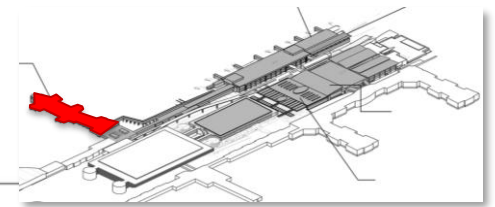
International Terminal - Concourse & Concessions





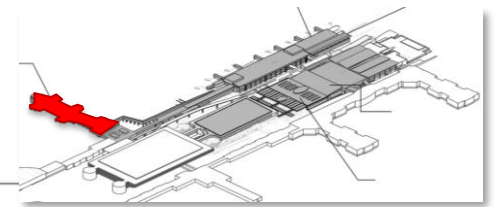
2. New International Concourse and Gates

International Terminal – New Concourse and Gates

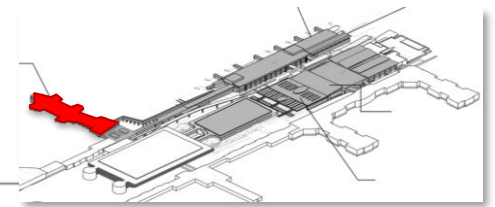


Copper ceiling - 12,000 sf

International Terminal – New Concourse and Gates



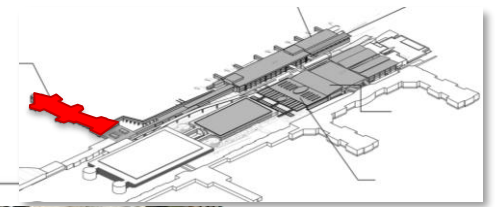
International Terminal – New Concourse and Gates



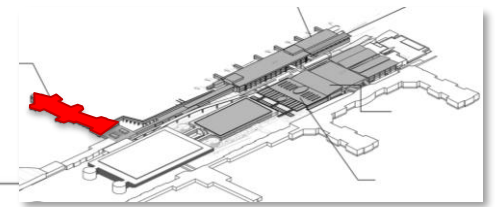
Examples of feature wall simulation
(approximately 20 scenes)

- Dynamic Evening Feature – Hues of White
- Dynamic Evening Feature – Whites & Blues (Clouds Moving)
- Dynamic Evening Feature – Red White and Blue (Flag Moving)

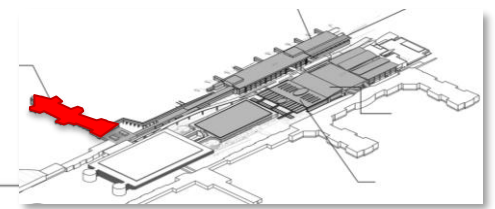
International Terminal – New Concourse and Gates



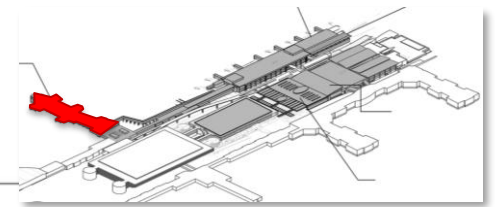
International Terminal – New Concourse and Gates



International Terminal – New Concourse and Gates

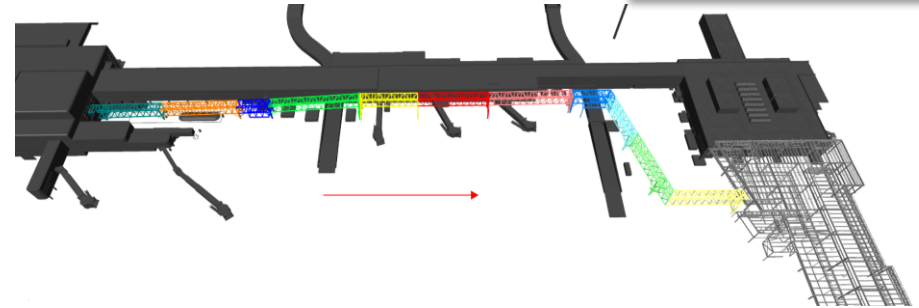
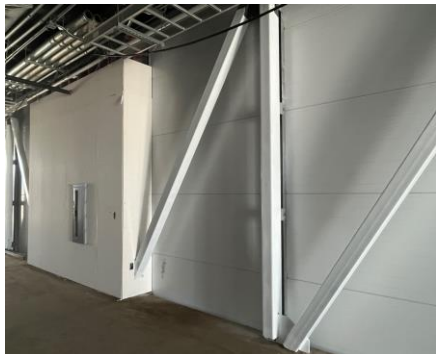
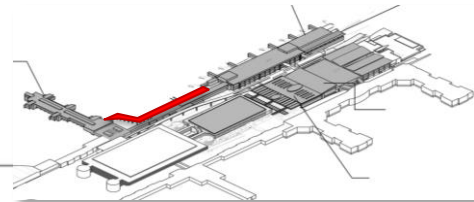


International Terminal – New Concourse and Gates



Feature wall - 13,600 sf (380 linear feet)

International Terminal – New Concourse and Gates



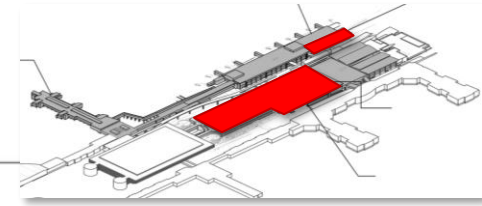
Sterile Corridor Connector - 1,700 feet



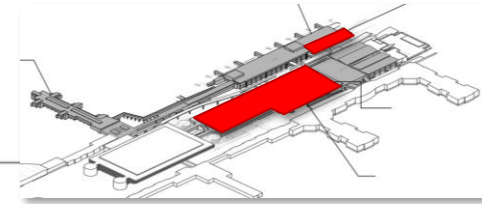
3. International Terminal Complex

Central Processor

International Terminal – Central Processor Departures Curb

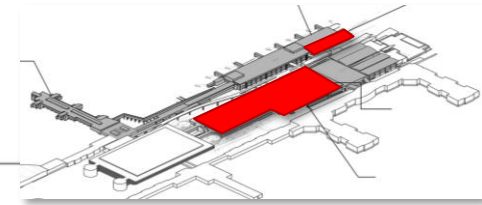


International Terminal – Central Processor

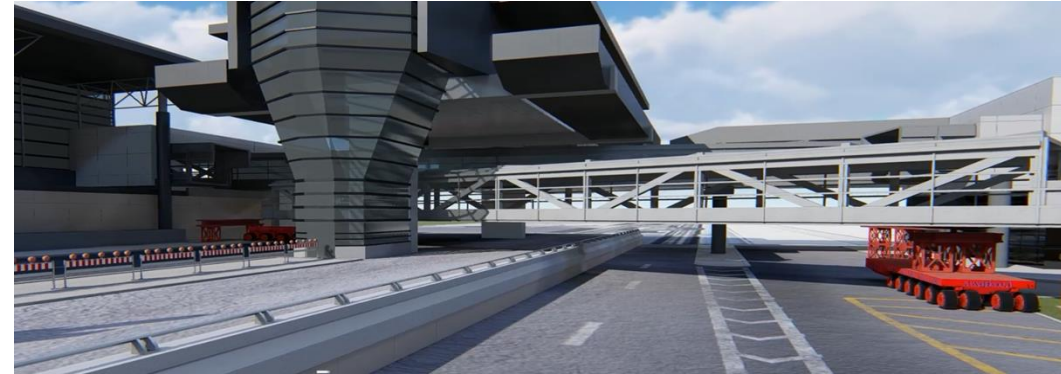
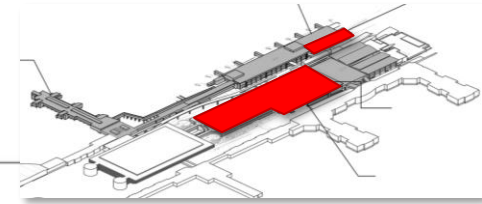


- There are 8 trusses that form the canopy over the International Central Processor departures curb
- Each truss takes 2,500 bolts to assemble
- Each truss span roughly 209' edge to edge
- It takes 14 semitruck loads to deliver a single completed truss
- Each truss weighs ~ 80 - 90 tons

International Terminal – Central Processor Trusses



International Terminal – BHS Bridge Assembly





4. International Terminal Enabling Projects

Enabling Utilities Landside Water Project - IAH New Pump Station #3



IAH Regional Detention Pond – Completed



- Part of and works in coordination with the IAH regional detention system.
- 1500 ft long, 290 ft wide and about 12 feet deep.
- The pond has a capacity of roughly **50 Acre feet** (enough water to cover 50 acres in 1ft deep of water) or 2,200,000 cubic feet.
- The pond can flow water from Garners bayou at a rate of over **2,000 cubic feet per second** and prevents the bayou water level from rising at an uncontrolled rate providing flood protection for the surrounding area.
- It was designed in coordination with Harris County Flood Control District and fits into their long-term plan for this drainage watershed.

Radio Intermediate Distribution Frame (RIDF) Relocation - Completed

- The RIDF is a key component that supports over 25,000 radio subscribers.
- RIDF supports the system providing >1,700 square miles of radio coverage for mission critical first responders.
- The top of the tower stands at 217 feet tall.
- The new RIDF site, tower and shelter all have been designed for room for expansion.
- Over 36,000 lbs. of batteries. (96 batteries @ 383lbs each= 36,768 lbs.)





5. Upcoming Council Actions

ITRP Upcoming Council Actions

| Date | Contract | \$m |
|-----------|--|-----|
| 2024/2025 | Program Management Support Services (PMSS) Close Out | TBD |
| | | |
| | | |
| | | |

Note: The appropriation plan supports the financing requirements and will be achieved in a phased approach.

Thank You