



Houston Safe Railroad Corridors

2025

Jack C. Hanagriff, Managing Consultant
Houston Smart City Program
Office of Innovation & Performance

Texas Leads the Nation in Grade Crossing Collisions

Texas Top 5 – Most Likely for a Crash

Ranking	Location	City
1	CR 1250	Midland
2	South Cravens Road	Missouri City
3.	Scott Street	Houston
4	CR 1160	Midland
5.	Wright Avenue	Jersey Village

Houston Top 5 –Most Likely for a Crash

Ranking	Location
1	Scott Street
2	Hillcroft Avenue
3.	Sheldon Road
4	Market Street
5.	Sherwin Street



*Federal Railroad Crash Prediction Data Base



Houston Leads the Nation in Stopped Train Events

- Texas leads the nation in stopped train events and Houston represents the biggest share of complaints in Texas (over 70%)
 - Houston has more than 3X more complaints than the next highest State (Illinois)
 - Nearly 8X the next highest city (Wichita, KA)
- HFD averages over 100 blocked crossing reports a month in 2025

Blocked Crossings Reported by HFD
Jan-Jun 2025

Event Type	Jan-25	Feb-25	Mar-25	Apr-25	May-25	Jun-25
Stopped Train	66	54	73	86	62	54
Slow Train	35	30	54	51	47	36
Other	0	2	0	5	4	4
Total Events	101	86	127	142	113	94

Source: HFD Calls for Service

FRA Blocked Crossings by City & State
Month of July 2025

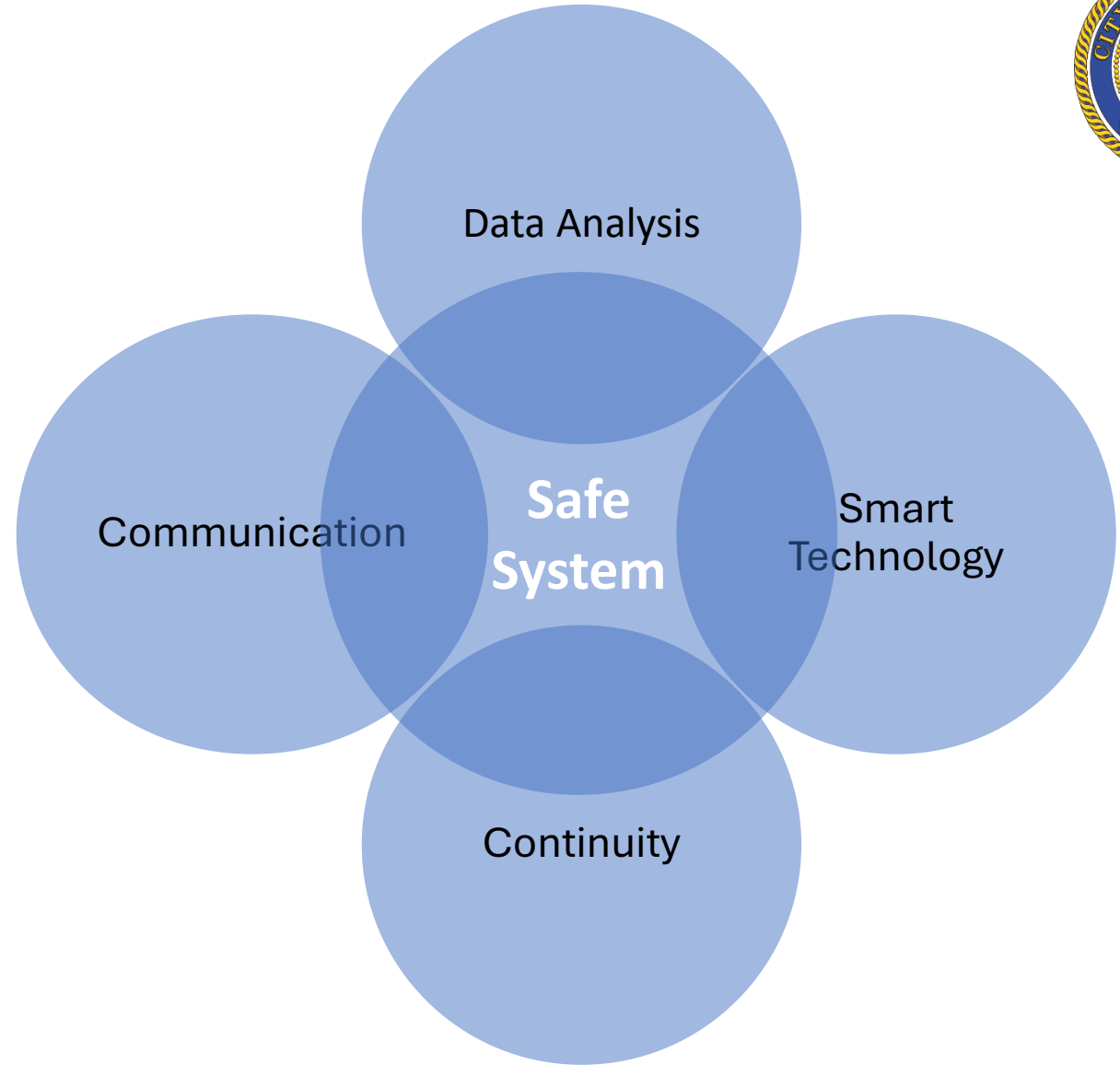
City/State	Events	City	Events
TX	748	Houston	530
<i>Houston</i>	<i>530</i>	Wichita	69
<i>Other TX Cities</i>	<i>218</i>	Ottumwa	44
IL	160	Norfolk	39
KS	141	Pendleton	35
IA	132	Salt lake city	31
OH	102	Chicago	21
IN	76	Fort worth	19
VA	59	Savannah	18
OK	59	Ferndale	18
OR	57		
AZ	57		
MI	55		

Source: FRA Blocked Crossing Data



Public Safety Strategy

Use a safe system methodology to conduct discovery and data collection on needs, events, concerns related to unsafe behavior and mobility impacts along Houston Freight Rail Corridors



Communication & Collaboration

- Rail Corridor Collaborative – Houston Emergency Services, HPW, and the four local railroads
- Rail Safety Focus Group – Senator Alvarado Initiative
- Rail Safety Task Force – East Houston Communities
- Houston Area Railroad Transformation – under the GCRD

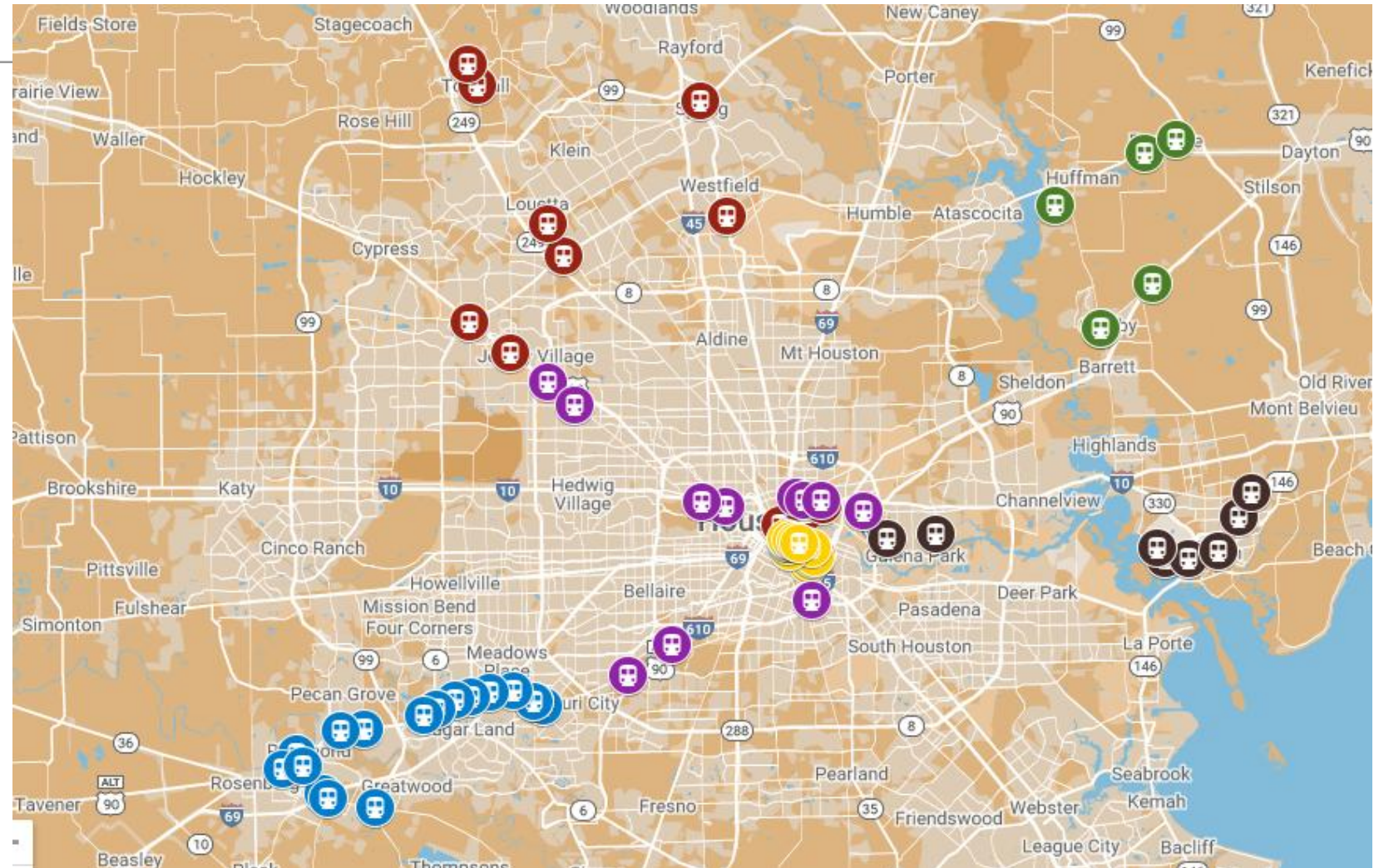
<u>Short Term</u>	<u>Mid Term</u>	<u>Long Term</u>
Crossing Prioritization List	Monitoring/Alerting Technology	Infrastructure Improvements
School Proximity List	Pedestrian Access	Legislation
Railroad Operating Practices	Funding	
Communication		
Signage (Wayfinding)		
Public Awareness Campaign		
Crossing Guards		





Regional Critical Crossings

- Delay First Responders
- Delay Vehicle, Pedestrian, & Bicycle
- Affect Essential Services
- ✓ 107 – Crossings Regionally
- ✓ 69 – Crossings in Houston
- ✓ Focus on Houston top 35





Create a Method to Centralize Blocked Crossing Data

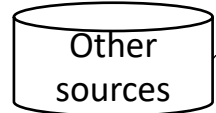
Improved data collection enables better outcomes

Data Flow (Future-State):

Data Sources (inputs)



Smart Camera
Data



*Real-time &
historical data
centralized in
one location*



Data Sources



Uses

Houston Transtar

- Wayfinding Apps
- Real-time Display Boards

Federal Railroad Administration

- Policy & Regulations

Railroad Companies

- Policy & Operational Support

GHC 911

- Emergency Computer-Aided Dispatch (CAD)



We need you!

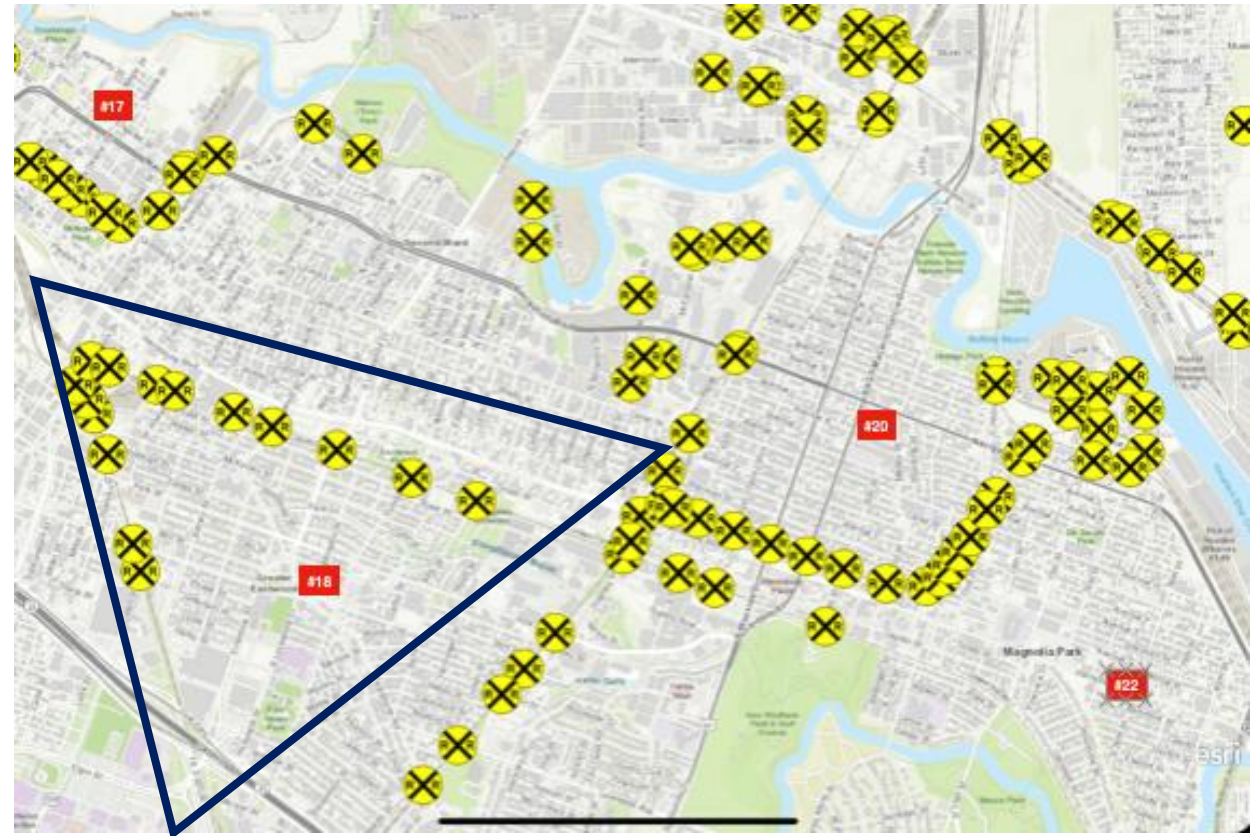
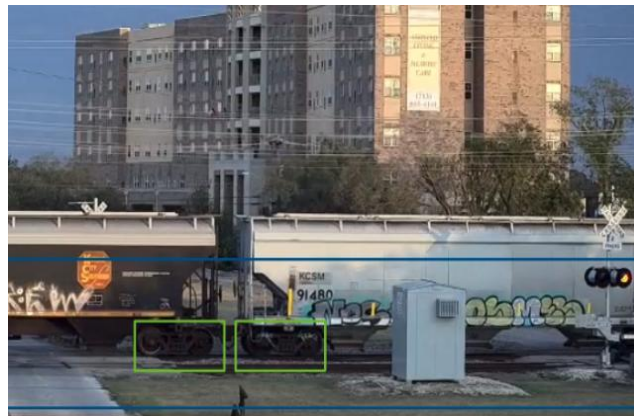
If you encounter a blocked train crossing:

1. **Call 311** – the City will document the crossing violation and provide a link to FRA's web portal
2. Go online and report the issue via the **FRA Blocked Crossing Portal**
www.fra.dot.gov/blockedcrossings

Test Technology to Collect “good data”

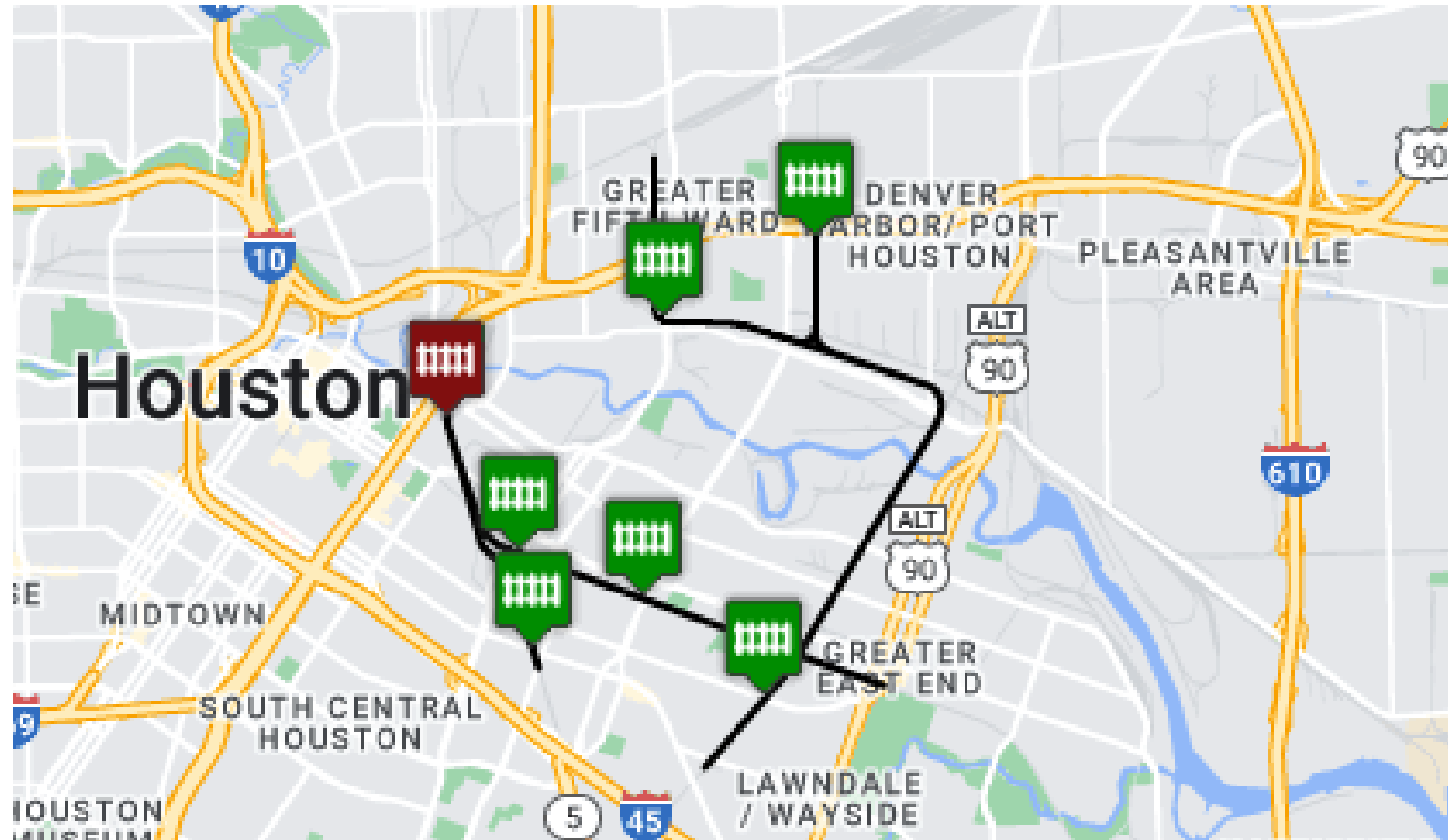


- Deploy Crossing Sensors and Cameras
- Give Access to HFD
- Connect to Transtar for Public Consumption
 - ✓ East End Train Triangle
 - ✓ Fifth Ward Railroad Rectangle
 - ✓ South Park Junction

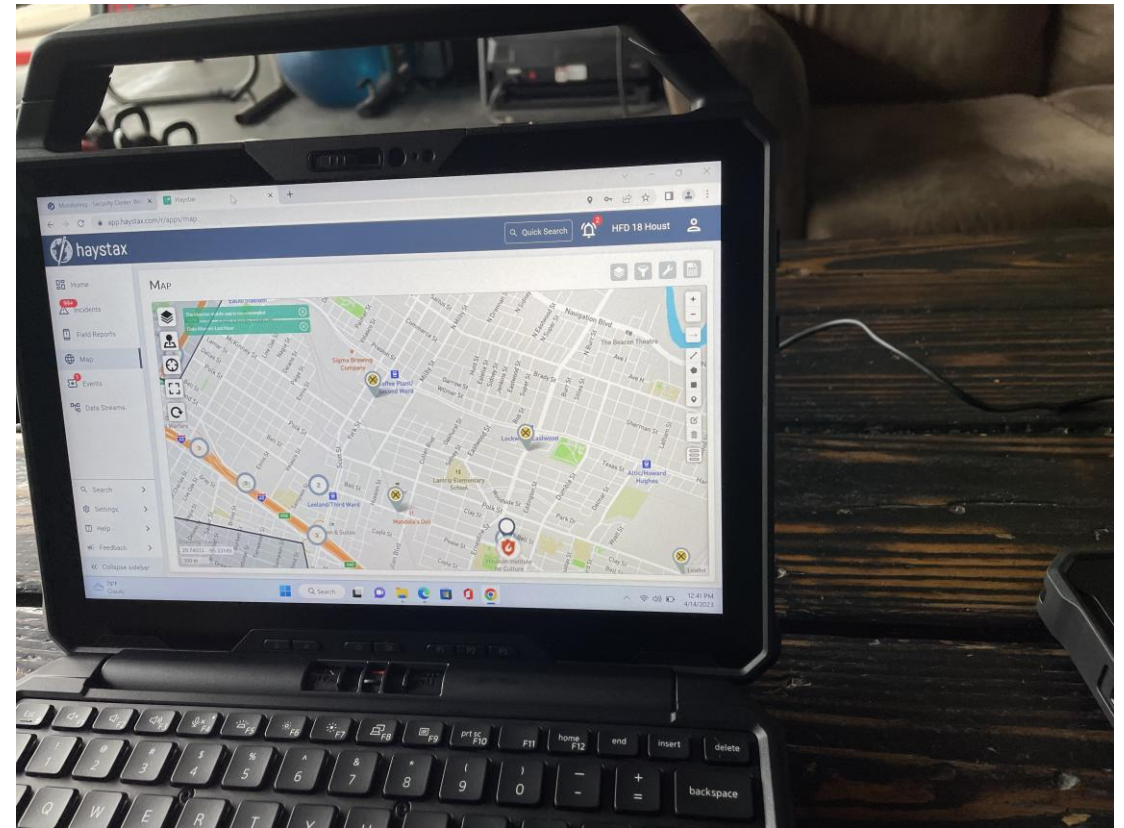
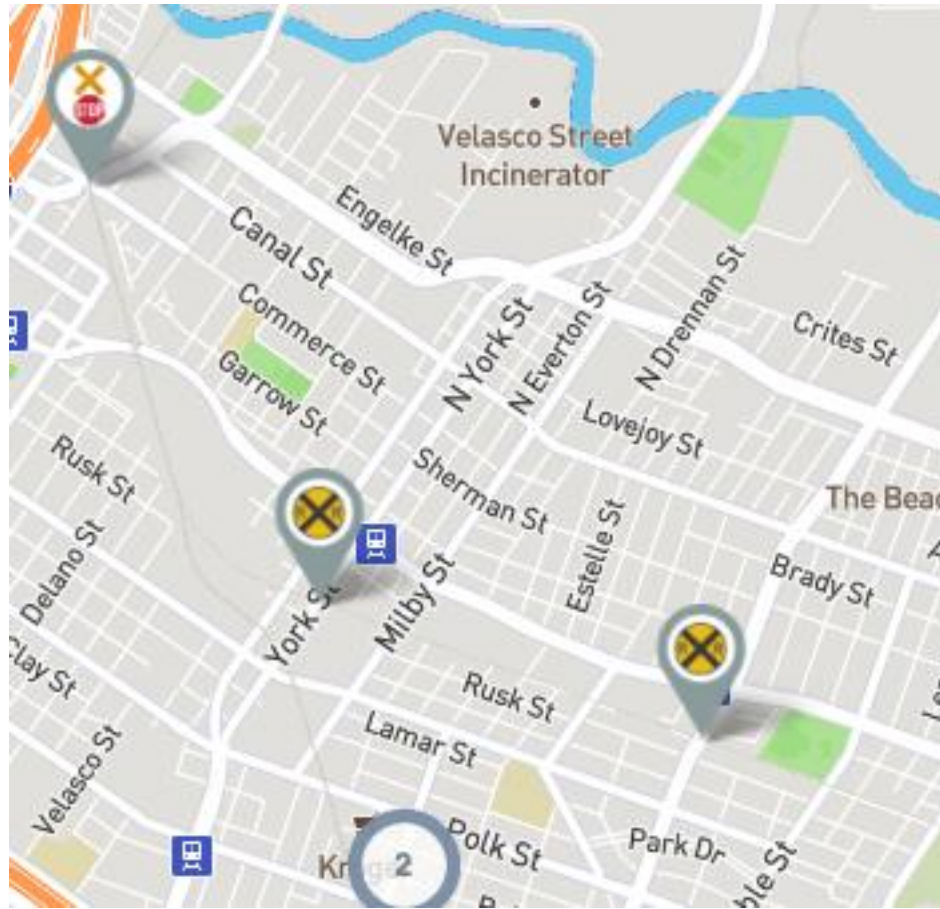




Crossing Sensor Detects



Map it and Display to HFD Vehicles

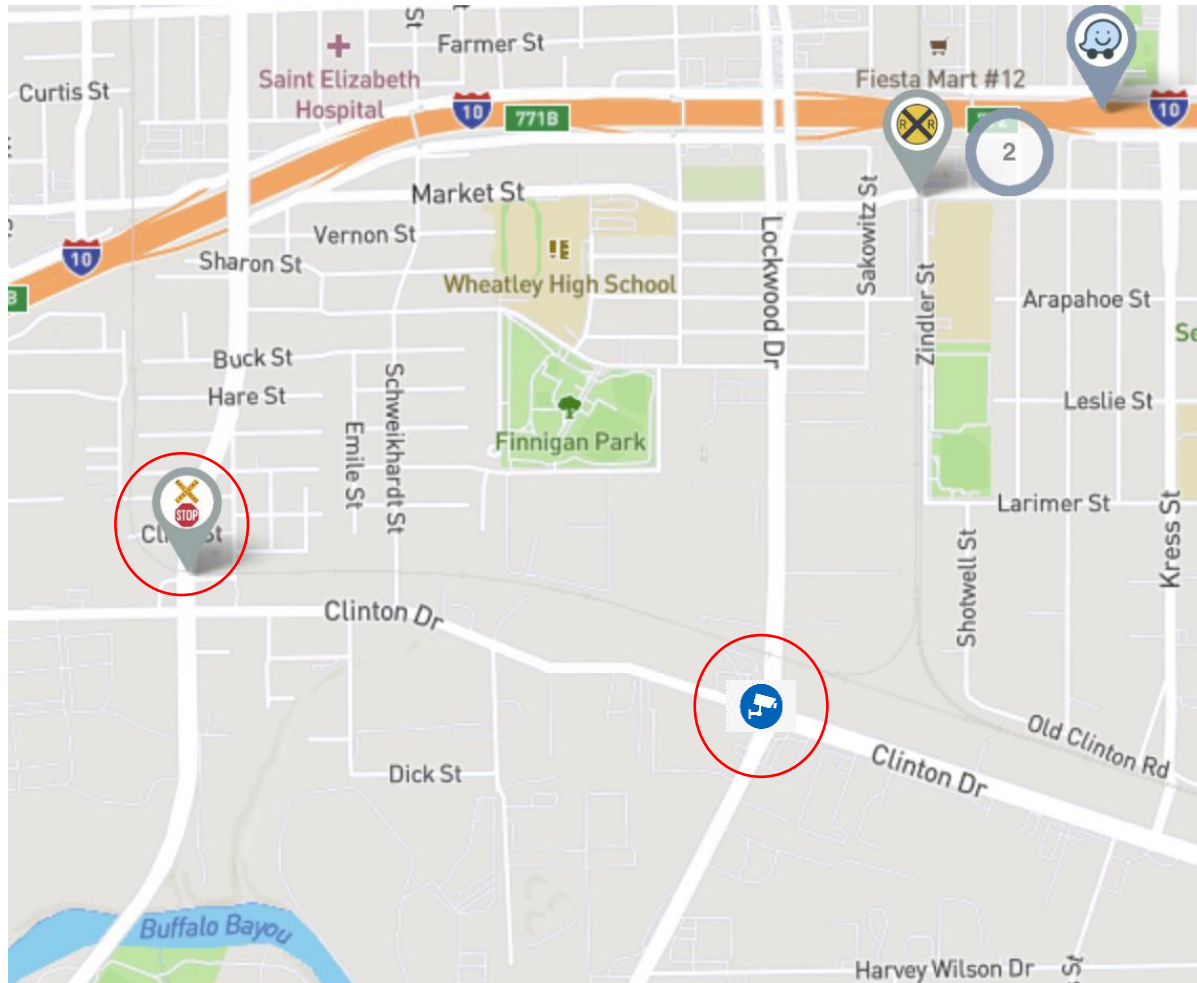


* open API to share data to mapping services or messaging boards

Fire Station Sees All



Deliverables



*Detection coupled with visual validation

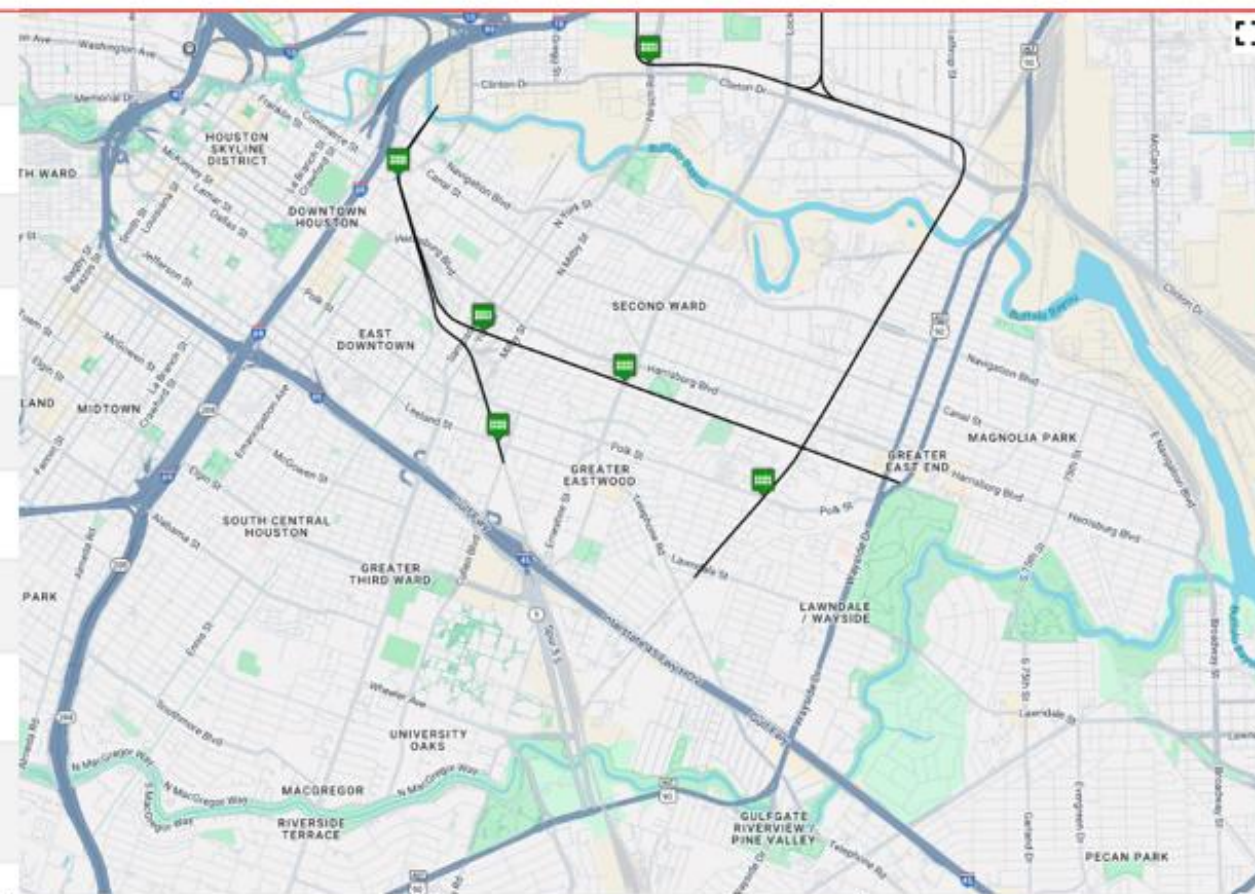


Houston Train Watch

Report a Blocked Crossing ([Link To FRA Blocked Crossing Dashboard](#))

Crossing Activity

ANTOINE STREET
Blockage Start: 07:18
Blockage End: 08:19
SOUTH PINEMONT DRIVE
Blockage Start: 13:21
Blockage End: 14:22
FONDREN ROAD
Last Blockage: 10:40
Duration: 4 minutes
HILLCROFT AVENUE
Last Blockage: 10:37
Duration: 4 minutes
CHIMNEY ROCK ROAD
Last Blockage: 10:35
Duration: 5 minutes
LOCKWOOD DRIVE
Last Blockage: 10:25
Duration: 1 minute
POLK STREET
Last Blockage: 10:09
Duration: 33 minutes
SOUTH SHAVER STREET
Last Blockage: 10:36
Duration: 2 minutes
POST OAK SOUTHBOUND FRONTAGE
Last Blockage: 10:29
Duration: 8 minutes
SCOTT STREET
Last Blockage: 10:32
Duration: 3 minutes
GENOA RED BLUFF ROAD
Last Blockage: 10:32
Duration: 1 minute
BRANTLEY STREET
Last Blockage: 10:27
Duration: 1 minute



Helpful Links

- [Operation Lifesaver](#)
- [Questions about Railroad Operations](#)
- [Live Trains Video Feed](#)
- [BNSF Web](#)
- [CPKC Web](#)
- [PTRA Web](#)
- [UPRR Web](#)

Railroad Emergency Numbers

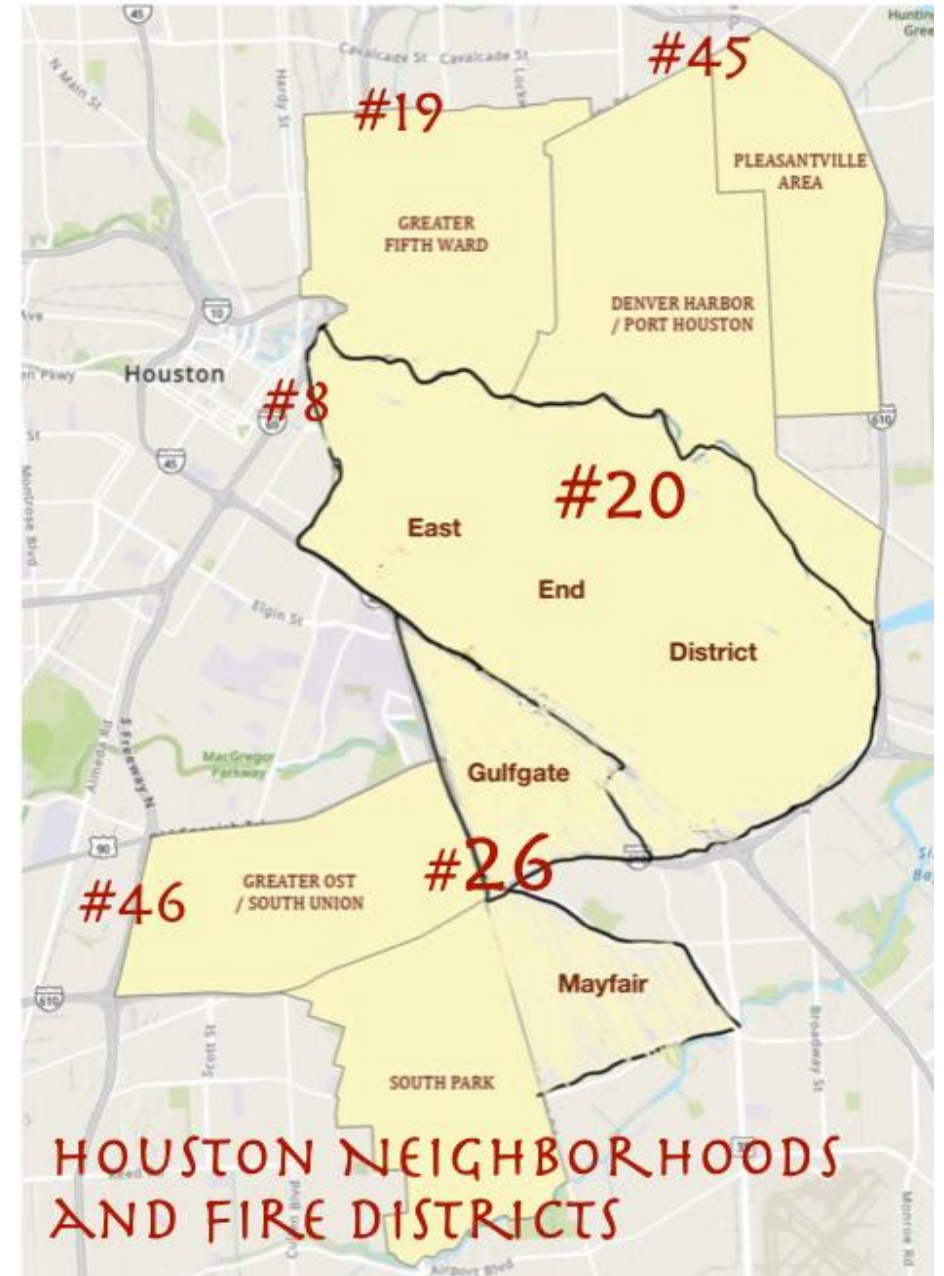
- BNSF
- PTRA
- UPRR

39.24	248	9.48
Avg. Daily Activation (hr)	Avg. Number of Activation...	Avg. Activation Duration ... (Minutes)

Expand the Program

City of Houston Safe Streets Post Crash Care Demonstration

- \$3.4 Million in Grant Funds over a Four-Year Period
- Support Public Safety Efforts & Post Crash Care
- Improve Emergency Routing
- Reduce response time
- Assist motorist mobility and reduce unsafe behaviors
- Reduce crashes by identifying traffic anomalies



Thank You

