

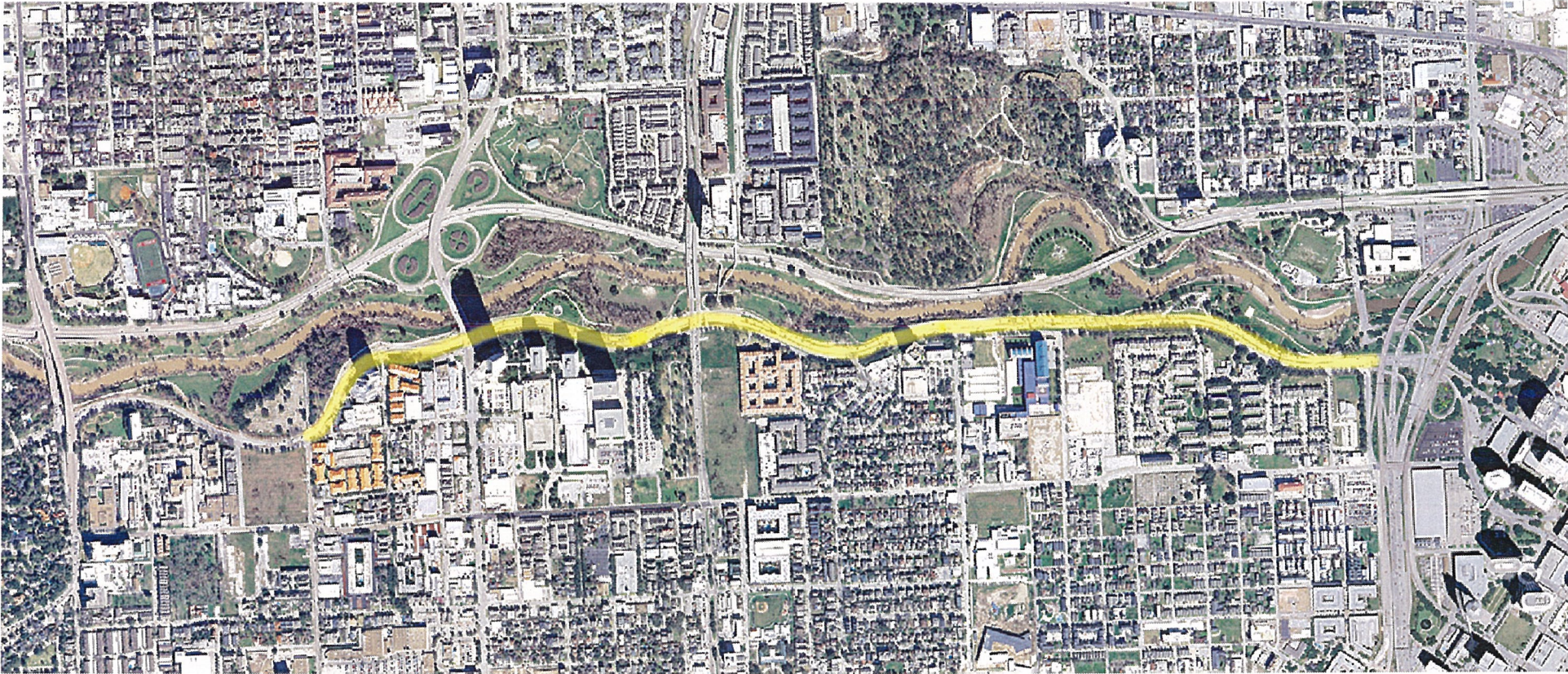
# Quality of Life Transportation, Technology & Infrastructure Joint Committee Meeting



Mayor Annise D. Parker



# Proposed Allen Parkway Improvements



Mayor Annise D. Parker



# Buffalo Bayou Park Improvements



Lost Lake



Johnny Steele Dog Park



Eleanor Tinsley Park



Mayor Annise D. Parker



# Allen Parkway Project Goals

- Improve public safety for park and parkway uses
- Improve access to/from neighborhoods south of Allen Parkway
- Provide vehicular parking for Buffalo Bayou Park
- Create a “scenic bayou drive” between Shepherd and Downtown



Mayor Annise D. Parker





Mayor Annise D. Parker





Mayor Annise D. Parker



# Roadway Modifications

- **Safety**

- Install traffic signals & pedestrian crossings at 4 locations

- Landscape medians to calm traffic

- Reduce speed limit

- **Access**

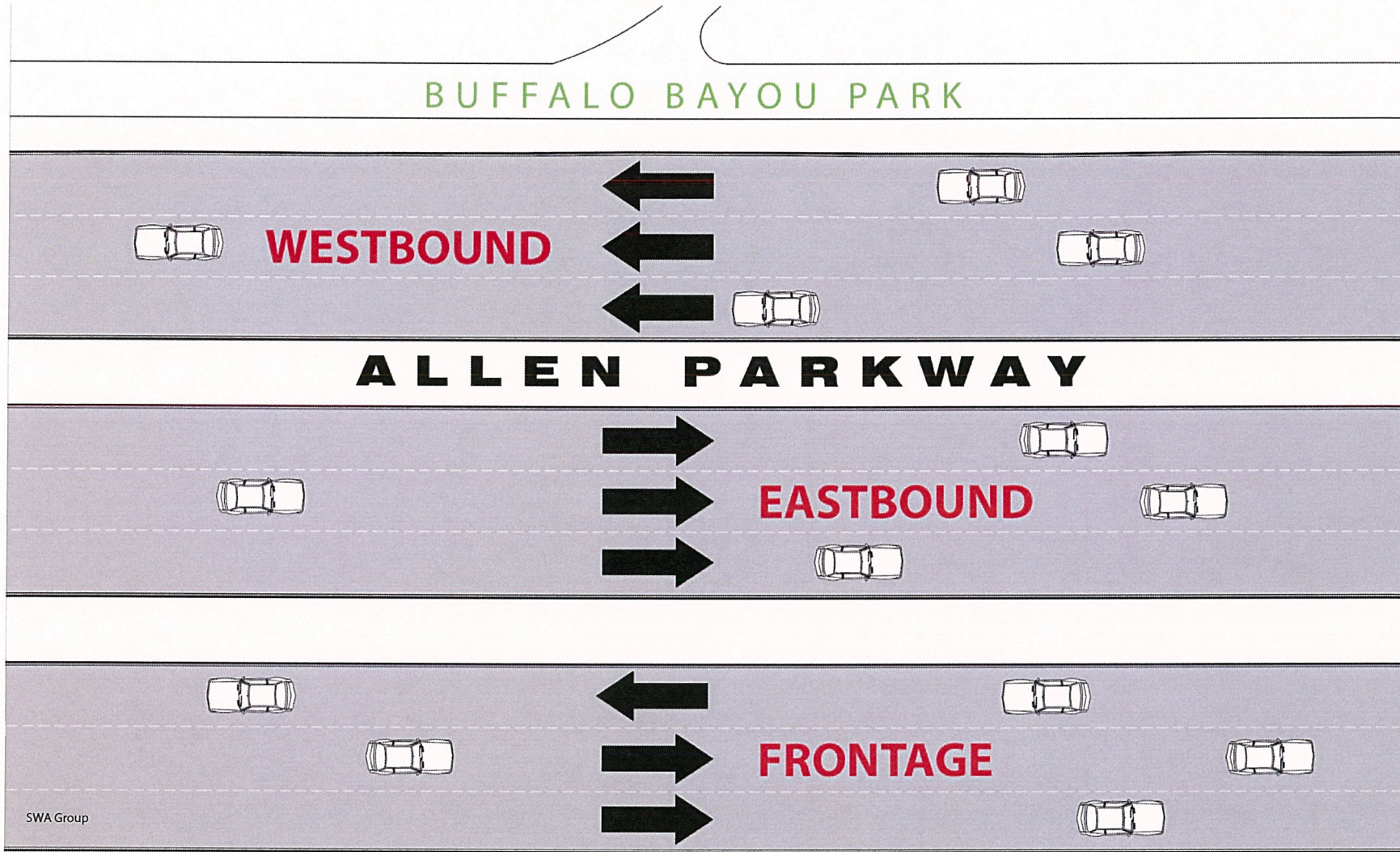
- Provide safer access to IH-45 (TXDOT)

- Provide safe access points to Buffalo Bayou Park for all users

- **Parking**

- Provide approximately 175 spaces along Buffalo Bayou Park

# Existing Lanes

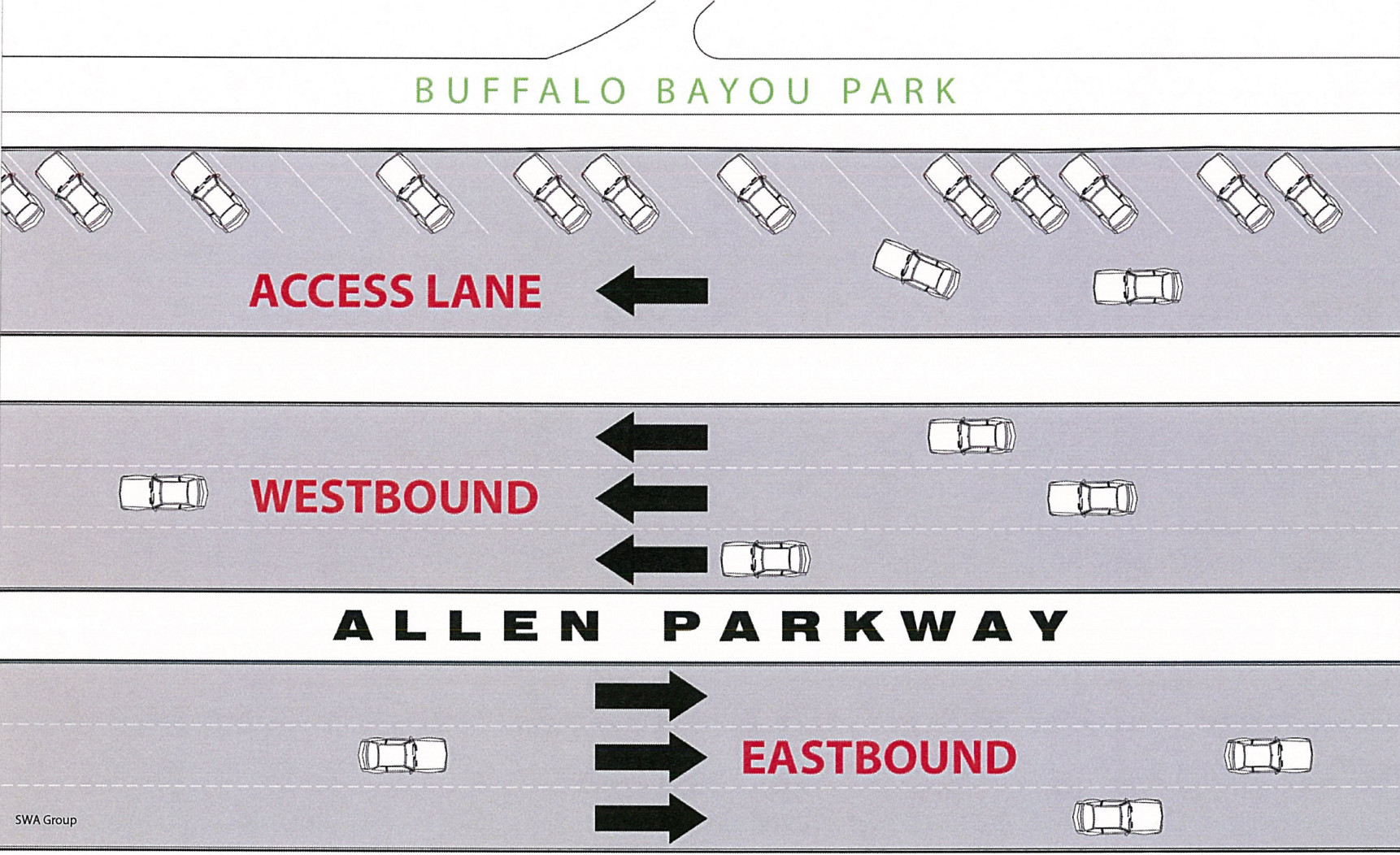


Mayor Annise D. Parker





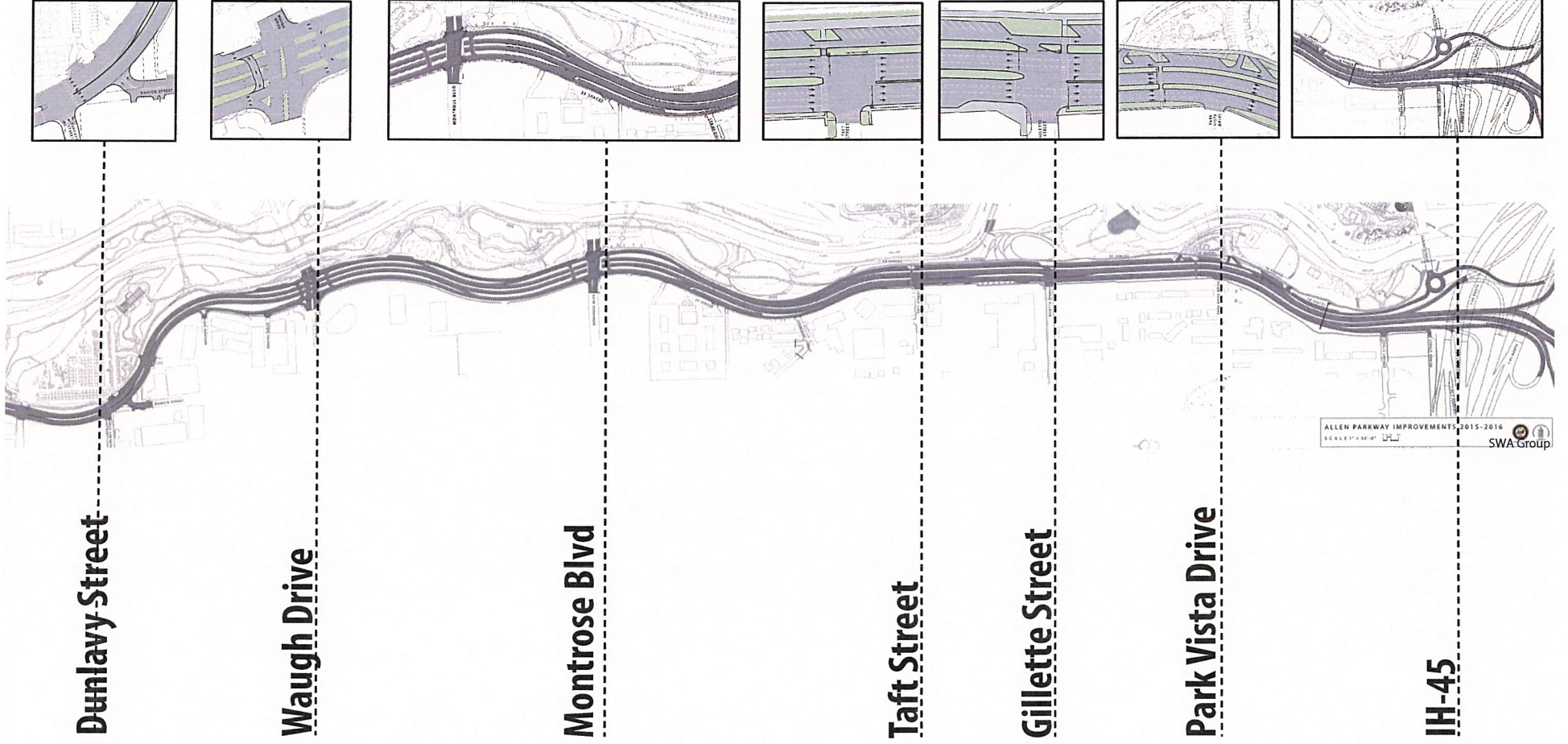
# Proposed Lanes



Mayor Annise D. Parker



# Proposed Improvements



**Dunlavy Street**

**Waugh Drive**

**Montrose Blvd**

**Taft Street**

**Gillette Street**

**Park Vista Drive**

**IH-45**



Mayor Annise D. Parker



# Taft Street - Existing Conditions



Mayor Annise D. Parker



# Taft Street - Parking & Access Lane

Create a more urban environment to encourage lower speeds



Mayor Annise D. Parker



# West of Taft Street - Existing Median



# West of Taft Street - Proposed Westbound



# East of Park Vista Drive – Existing Frontage



Mayor Annise D. Parker



# Skyline View



Mayor Annise D. Parker





# Eastbound Allen Parkway



Walter P Moore



Mayor Annise D. Parker

Video Animation



# Traffic Analysis

- Existing peak hour traffic volumes
- Existing lane configurations and signal timings
- Proposed lane configurations with new signal timings
- Analyzed various scenarios

**Existing vs. Proposed**

**40 mph vs. 35mph**

**AM and PM peak hours**



Mayor Annise D. Packer



# Travel Time Comparison

Allen Parkway	AM Peak Hour Travel Time (min)		PM Peak Hour Travel Time (min)	
	Eastbound	Westbound	Eastbound	Westbound
Existing (40 mph)	4.17	4.81	3.94	4.59



Mayor Annise D. Parker



# Travel Time Comparison

Allen Parkway	AM Peak Hour Travel Time (min)		PM Peak Hour Travel Time (min)	
	Eastbound	Westbound	Eastbound	Westbound
Existing (40 mph)	4.17	4.81	3.94	4.59
Assumed (35mph) w/ additional signals	5.15	5.50	4.91	5.53



Mayor Annise D. Parker



# Travel Time Comparison

Allen Parkway	AM Peak Hour Travel Time (min)		PM Peak Hour Travel Time (min)	
	Eastbound	Westbound	Eastbound	Westbound
Existing (40 mph)	4.17	4.81	3.94	4.59
Assumed (35mph) w/ additional signals	5.15	5.50	4.91	5.53
Difference	.98 = 59 seconds	.69 = 41 seconds	.97 = 59 seconds	.94 = 56 seconds



Mayor Annise D. Parker



# Conclusion

- **Safer access when crossing Allen Parkway**

  - Addition of three traffic signals with pedestrian crossings

  - Addition of a pedestrian-activated traffic signal

  - Reduced speed

- **Auto traffic benefits**

  - Safer access to IH-45 (TXDOT)

  - Road alignment is improved

- **Parking for Buffalo Bayou Park**

  - Approximately 175 spaces

# Proposed Project Schedule & Budget

- Design February 2015 – June 2015
- Construction July 2015 – May 2016
- Project Budget \$10 MM



## **Requested Action of Council**

- **Increase of Downtown Redevelopment Authority's debt authorization**

Existing \$30 million

Proposed Increase of \$60 million

- **Why? Major DRA projects 2015-2017:**

Dallas Street Shopping District Improvements

Main Street Improvements

Allen Parkway

South downtown park