

KINDER FOUNDATION



Accelerating the Delivery of the 2015 Memorial Park Master Plan: 10 Year Project Plan

Background

2011	Drought devastated Memorial Park forests, Houston's largest urban wilderness
2012	City leadership spearheaded creation of long-range Master Plan for Memorial Park and to build Memorial Park Conservancy capacity
2013	Council approved TIRZ annexation of Park to support long range project plan
2015	Council approved Memorial Park Master Plan and tri-party Development Agreement <ul style="list-style-type: none">• Informed by input from 3,000 Houstonians + 75 ecological, historical, parks and other experts• Identified long range capital projects• Named Memorial Park Conservancy as operator and manager of 1,100 acres of Memorial Park's 1,500 acres with oversight by HPARD and Standards Committee• Created framework to attract private donations to support capital improvements (public-private partnership model)

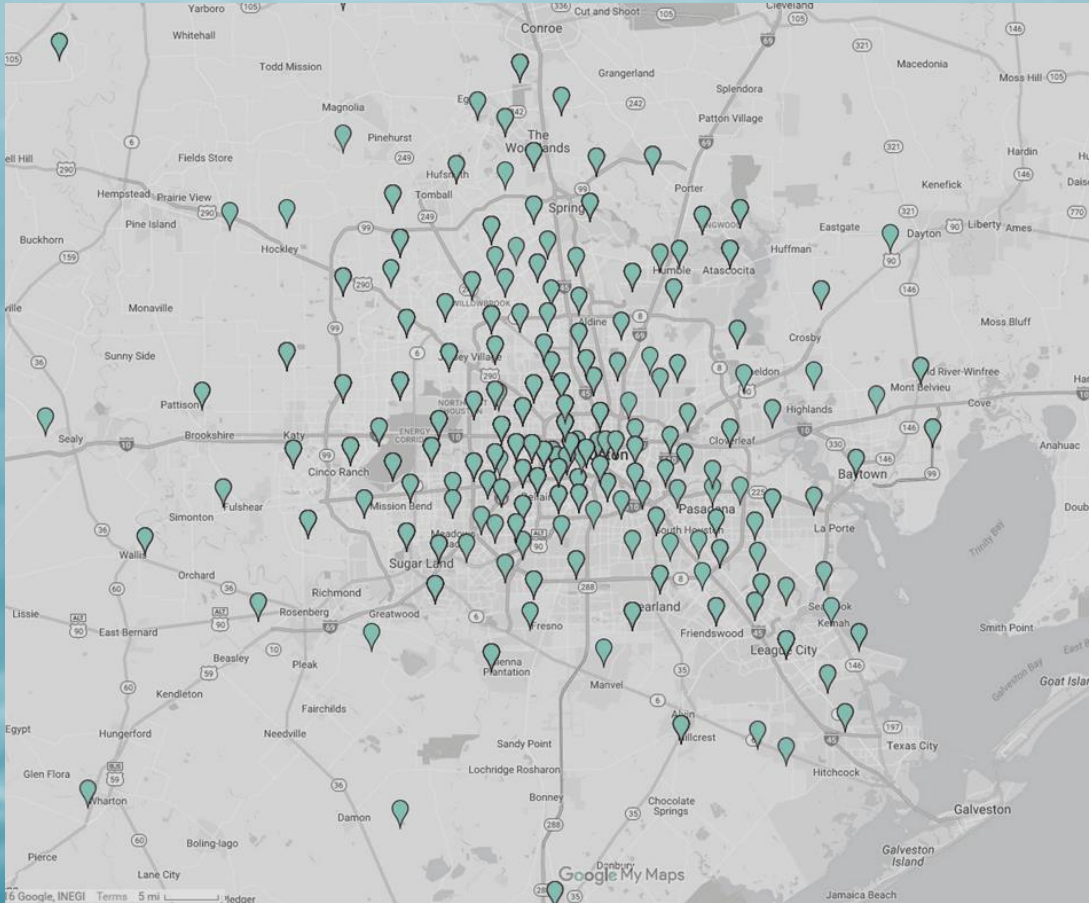
Background, cont.

2017	Hurricane Harvey elevated need for healthy green infrastructure , role of Memorial Park in a resilient Houston
2018	Today <ul style="list-style-type: none"><li data-bbox="227 592 1711 704">• Next phase of project initiated by Kinder Foundation donation of \$70M and Conservancy commitment of \$55M<li data-bbox="227 782 1591 832">• Uptown TIRZ financials support \$50M of capital investment<li data-bbox="227 911 1727 961">• City of Houston well-positioned for \$30M federal trails (TIP) grant

Memorial Park and Central Park



Memorial Park | A Park for All Houstonians



4 million people visit Memorial Park annually

A 2015 survey identified visitors from 170 distinct zip codes across the greater Houston region

Key Components of Amendment

- **Significant completion of 2015 Master Plan in 10 years**
 - Kinder Foundation provides \$70M for capital projects
 - MPC will commit \$15M already raised to capital projects, and raise an additional \$40M in philanthropic funds for capital projects
 - \$125M in private funds leverage \$80M in public funds
 - **Provides long-term funding for Park care**
 - Maintenance and greenspace care will be funded through proceeds from Memorial Park golf, paid parking, public funding and fundraising
 - Endowment for long-term care of assets
-

Kinder Foundation

- Provides \$70,000,000 to MPC for 10-year plan projects, the largest single gift in Houston parks history
 - Approves any substantive changes to 10-year plan projects
 - Has representation on the Standards Committee
-

Memorial Park Conservancy

- Provides \$15,000,000 to complete Eastern Glades
 - Funds additional \$40,000,000 for 10-year plan capital projects
 - Provides funds to care for the Park
 - Funds \$1,000,000 for operations & maintenance annually
 - Creates \$1,000,000 endowment for capital expenditure reserves
 - Funds \$1,000,000 endowment for resiliency fund
 - Funds \$5,000,000 in general endowment
-

- Eliminates \$400,000 annual funding provided by HPARD to MPC for greenspace maintenance and \$200,000 obligation from HPARD to be paid to MPC for the Cullen Running Trails Center → HPARD Neighborhood Playground Initiative
 - Golf fund revenues of \$200,000 will be provided to MPC to support greenspace maintenance
 - Paid parking will be added to portions of the Park with meter rates of \$1 per 3-hour visit with a commitment to always keep areas of free parking available in the Park
-

Uptown Development Authority

- Funds \$50,000,000 in capital improvements per existing UDA project plan
 - Provides an additional \$500,000 annually from FY2025 - FY2028 annually for ecological restoration projects
 - Provides ongoing care for 10-year projects
-

Summary of Capital Commitments

Project	City/Public (Uptown TIRZ)*	Potential Federal	MPC Capital Campaign	Total
Destinations			\$ 58,000,000	\$ 58,000,000
Central Connector	\$ 30,000,000		\$ 40,400,000	\$ 70,400,000
Connectivity in Park	\$ 5,000,000		\$ 10,900,000	\$ 15,900,000
Connectivity to Park	\$ 7,000,000	\$ 30,000,000		\$ 37,000,000
Stormwater Management	\$ 5,000,000		\$ 2,300,000	\$ 7,300,000
Recreation and Amenities	\$ 3,000,000		\$ 8,700,000	\$ 11,700,000
Endowment			\$ 4,700,000	\$ 4,700,000
Subtotal	\$ 50,000,000	\$ 30,000,000	\$ 125,000,000	\$ 205,000,000

Summary of Greenspace Maintenance Targets

	FY2019	FY2023	FY2029-2041
Golf	\$200,000	\$200,000	\$200,000
Parking	\$135,000	\$375,000	\$750,000
MPC contributions	\$35,000	\$255,000	\$262,500
UDA funding	\$700,000	\$1,216,000	\$888,200
Total	\$1,070,000	\$2,046,000	\$2,100,700

2015 Memorial Park Master Plan | Public Input

ENGAGING HOUSTONIANS IN THE MASTER PLAN PROCESS

The master planning team has engaged 3,300 people in public planning process via public meetings, online input, and focused workshops.

**MEMORIAL
PARK**
TOMORROW

**MEMORIAL PARK IS
1500 ACRES OF PARKLAND
FOR THE ENTIRE CITY OF HOUSTON
TO ENJOY.**



1200 participants
Joined eight public meetings



288 participants
Joined twenty focused workshops

Improving Resiliency by Establishing Healthier Ecologies

Existing Conditions: Vegetation Composition



source: Berg Oliver Associates

-  **Mature Mixed**
-  **Well-Drained**
-  **Pine-Dominant**
-  **Hardwood-Dominant**
-  **Native Prairie**
-  **Poorly Drained**

Vision: Diverse Ecological Corridors



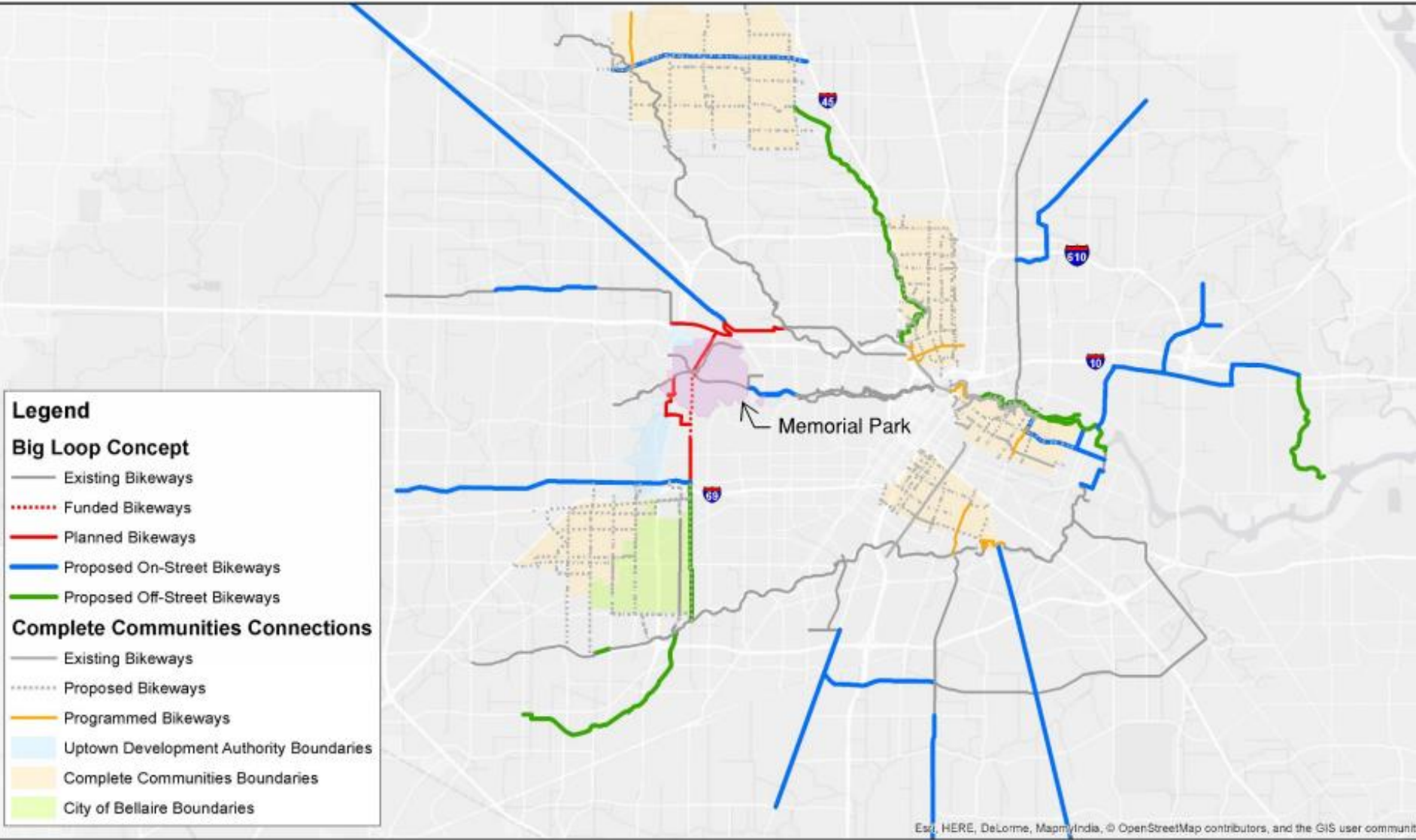
source: NFW with Berg Oliver Associates

-  **Riparian Forest**
-  **Riparian Edge & Barranco Forest**
-  **Pine-Hardwood Forest**
-  **Pine-Hardwood Savannah**
-  **Native Prairie**
-  **Wet Savannah and Prairie**
-  **Naturalized Golf Course**
-  **Bog Areas**
-  **Ponds and Stream Corridors**

Connecting with Houston's Past



Connecting Memorial Park to Houston's Trail Network



Esri, HERE, DeLorme, MapmyIndia, © OpenStreetMap contributors, and the GIS user community

Connecting a Divided Park

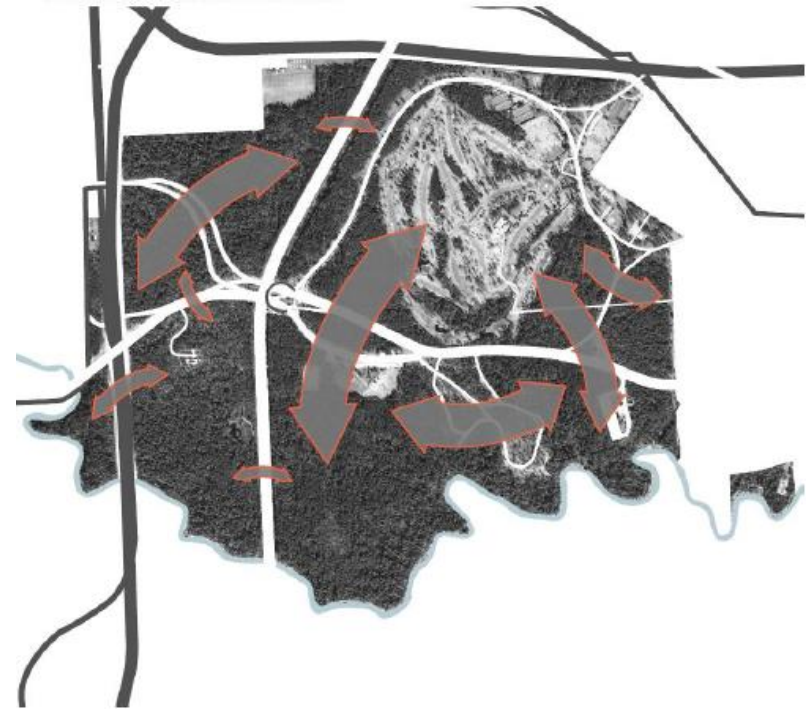
Existing Condition

Divided Park



Vision

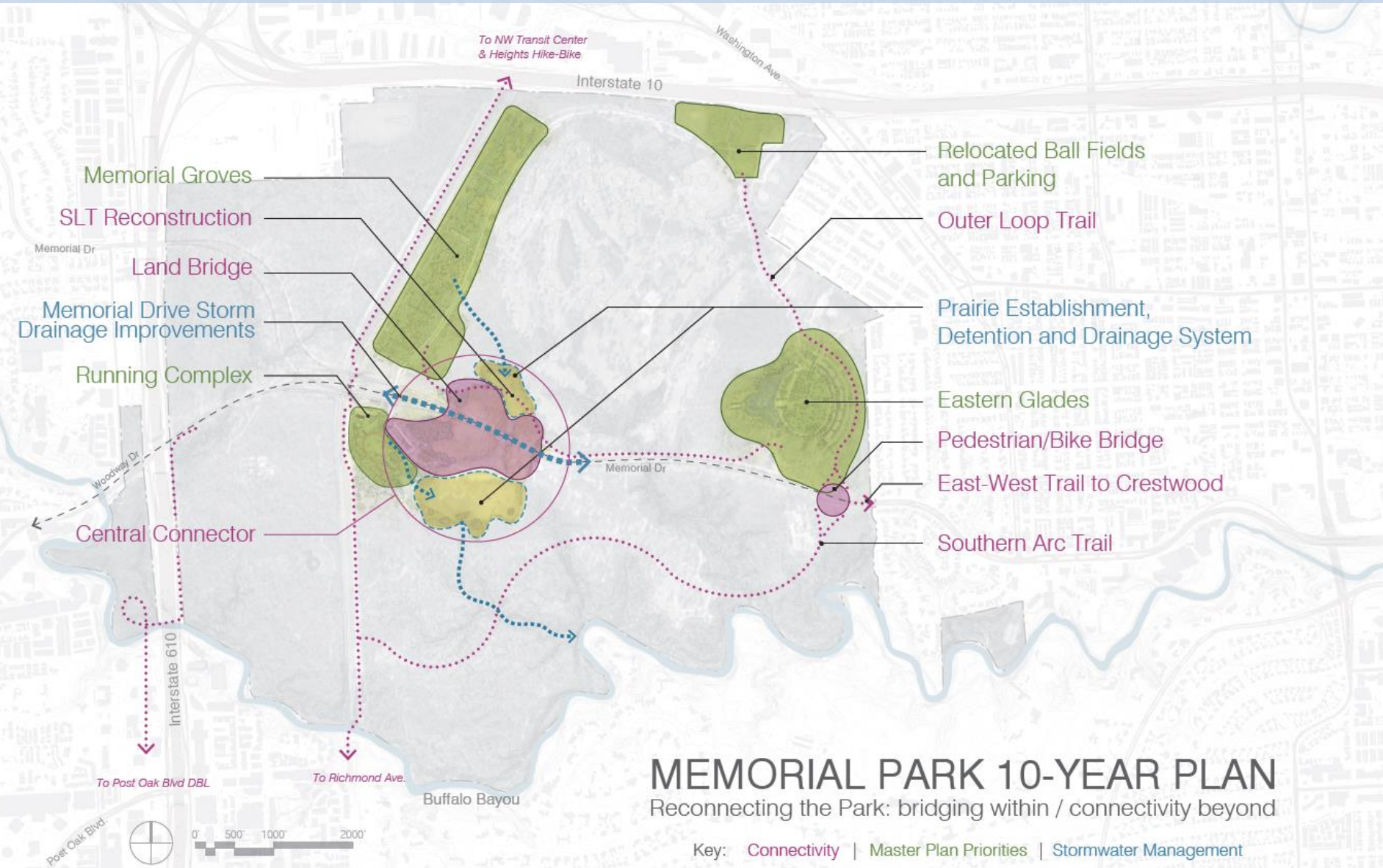
Reconnected Park



2015 Memorial Park Council-Approved Master Plan



Accelerating Delivery | 10-Year Project Plan



Memorial Groves

SLT Reconstruction

Land Bridge

Memorial Drive Storm Drainage Improvements

Running Complex

Central Connector

Relocated Ball Fields and Parking

Outer Loop Trail

Prairie Establishment, Detention and Drainage System

Eastern Glades

Pedestrian/Bike Bridge

East-West Trail to Crestwood

Southern Arc Trail

To NW Transit Center & Heights Hike-Bike

Interstate 10

Washington Ave

Memorial Dr

Memorial Dr

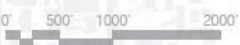
Woodway Dr

Interstate 610

To Post Oak Blvd DBL

To Richmond Ave.

Buffalo Bayou



MEMORIAL PARK 10-YEAR PLAN

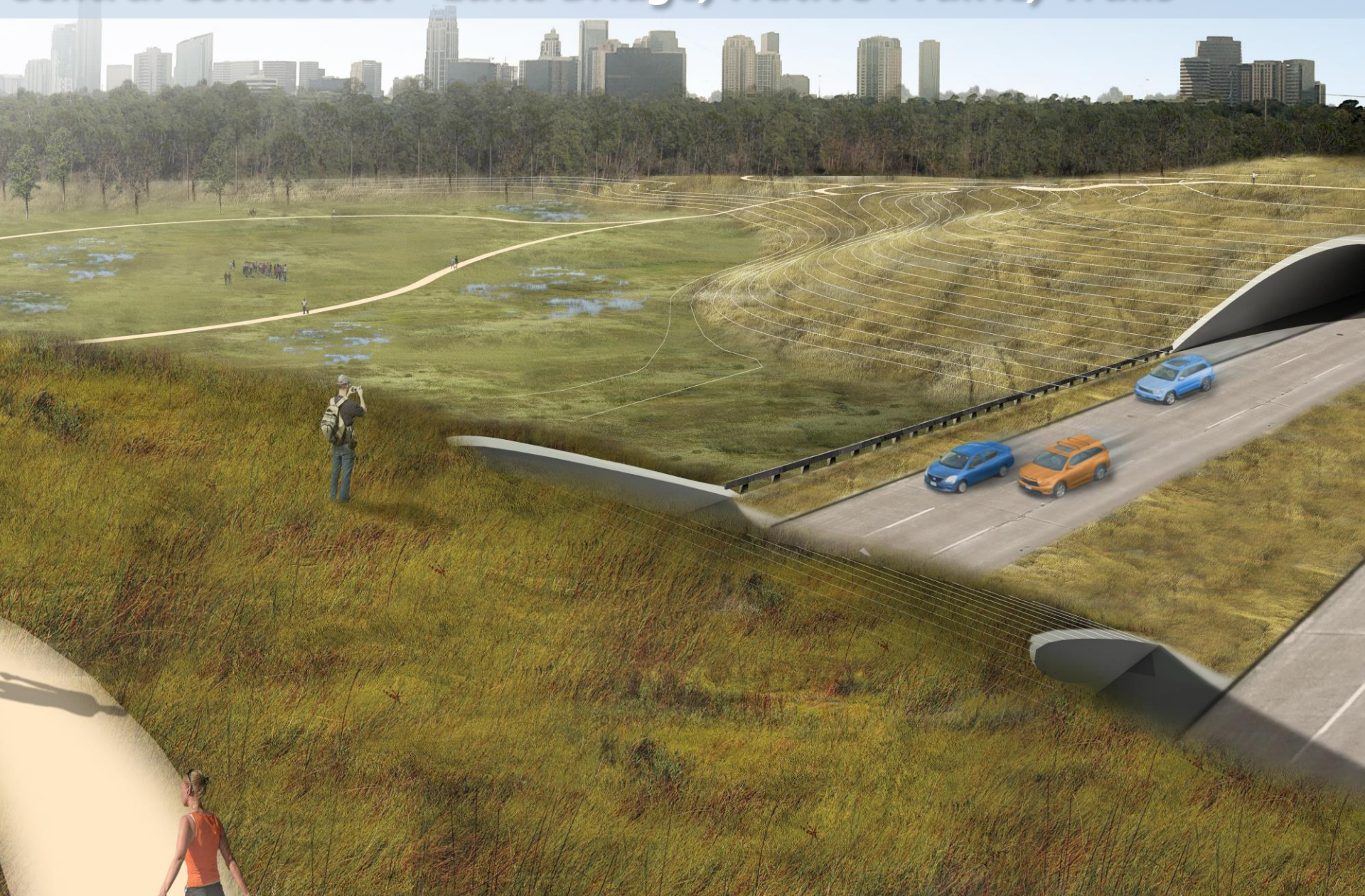
Reconnecting the Park: bridging within / connectivity beyond

Key: Connectivity | Master Plan Priorities | Stormwater Management

Healing 75-Year Divide While Expanding Green Infrastructure *Central Connector - Land Bridge, Native Prairie, Trails*



Healing 75-Year Divide While Expanding Green Infrastructure *Central Connector - Land Bridge, Native Prairie, Trails*



Honoring Houston's Contribution to WWI, Camp Logan: *Memorial Groves*



Improving Recreational Amenities: *Running Center Complex*



Completing 1st Project Already Underway: *Eastern Glades*



Completing 1st Project Already Underway: *Eastern Glades*





MEMORIAL PARK
CONSERVANCY

Thank you!