

COMMUNITY CODE ENFORCEMENT



Inspections and Public Service (DON)
Transition Houston Permitting Center (HPW)

RUDY MORENO, DEPUTY DIRECTOR



HOUSTON PUBLIC WORKS MERGER

Houston Permitting Center

Business Support

Open Records

Contract
Administration
& Lien
Collection

Service Call
Center

Education &
Community
Outreach

Community Code Enforcement

Dangerous
Buildings

Nuisances,
Abatement, &
Junk Motor
Vehicles

Bandit Signs

Hearing &
Liens

CULTURE CHANGE

Workplace Transformation

- Transparent decision making
- Reorganizing to streamline roles and responsibilities
- Consolidation of workspace to breakdown silos and encourage collaboration
- Providing the same CMC fundraising activities and teambuilding events in alignment with Houston Public Works



POST MERGER ACTIONS

Alignment & Streamlining Functions

- Sign Administration Operations
 - Sign inspectors now enforce bandit sign
- Holistic Investigations
 - Code Investigations expand into neighborhood enforcement
- Open Records consolidation
- Communications and Education/Outreach consolidation



POST MERGER ACTIONS

Expanding Partnerships

- Expanding Partnerships
 - Houston Police Department expanding warrant service
 - Houston Public Works –Transportation & Drainage Operations approach to private and public mowing initiatives



MEASUREABLE RESULTS - JULY

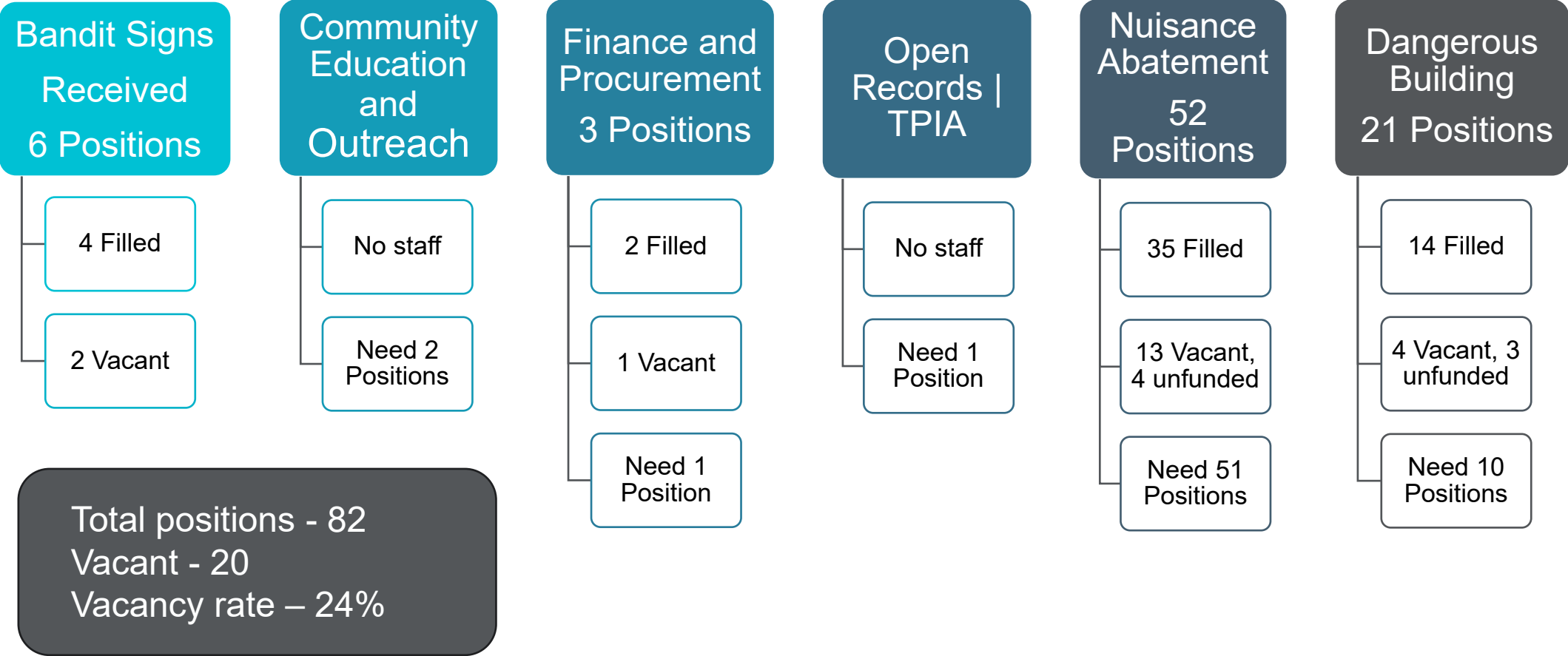
Outputs post-merger

- Abatements performed – 169
- Junk motor vehicles crushed - 8
- Community Education | Outreach events - 4
- Open Records | TPIA request completed - 72



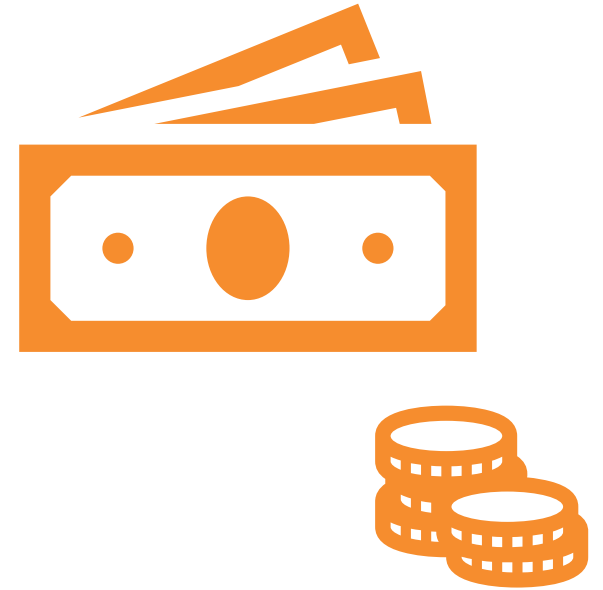
CHALLENGES

Insufficient Staffing



CHALLENGES

- Inherited contracts with limited spending capacity
- Scope of work in contracts need updating to match operational needs
 - Graffiti removal, structure boarding, and make-safes
- Strain on capacity to address backlogged properties while addressing new complaints



ACTION – DANGEROUS BUILDINGS

Changing perspective on Dangerous Buildings

- Structural
 - Potential collapse
 - Fire risk
- Factors associated with a dangerous building
 - Criminal activity
 - Health threats
 - Visually unappealing – property value impact
 - Decreased quality of life for community



ACTION – DANGEROUS BUILDINGS

\$25M investment of Stormwater funds to demolish Residential and Commercial Structures

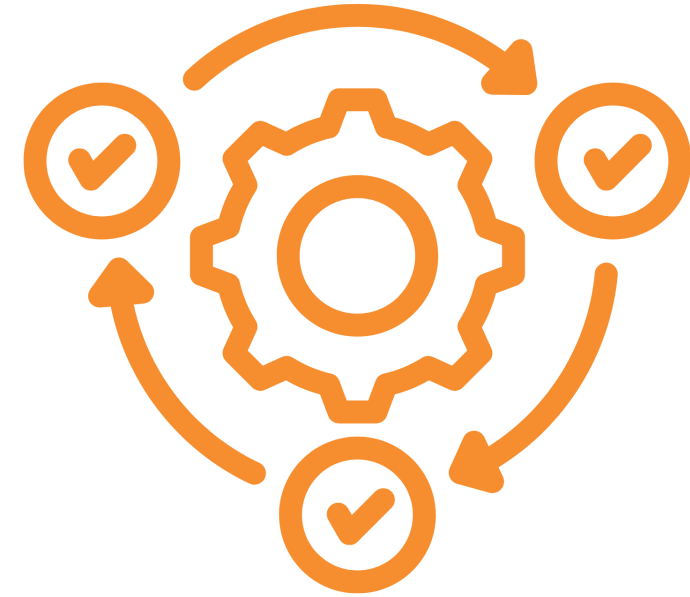
- Improves drainage, reduces flooding
 - Removal of impervious surface
- Remove obstructions from waterways, outfalls, ditches, and drains
- Eliminating asbestos and contaminants from entering waterways



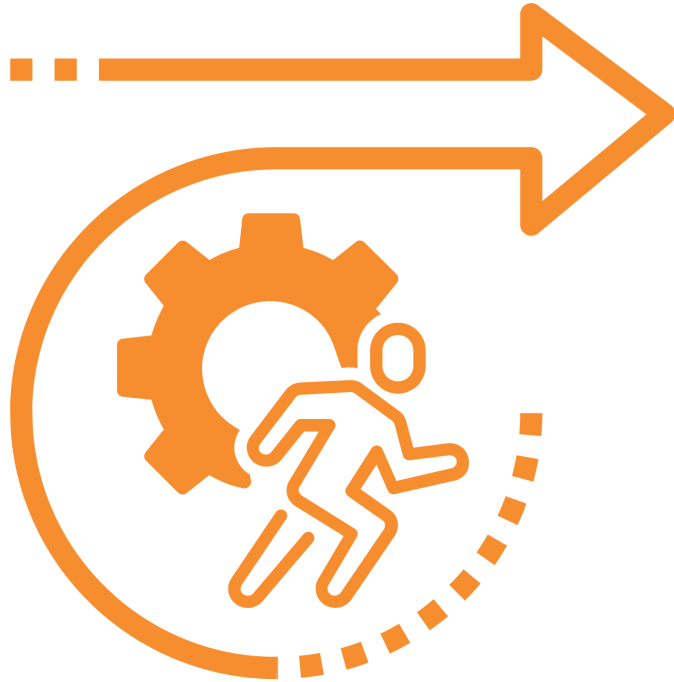
ACTION - REINVESTMENT

Short Term

- Staffing and training
- Identifying operational efficiencies
- Expand contract capacity for inherited contracts
- Increasing resources and assets



ACTION - REINVESTMENT



Long Term

- Multi-departmental staffing initiative
- Expanding partnerships
- Revise scope of future contracts with sufficient funding
- Modernizing systems and assets

QUESTIONS

thank you!



HoustonPublicWorks.org

[f](#) [@](#) [X](#) [@](#) @HouPublicWorks