

**Northeast Water Purification Plant Expansion**  
**Second Supplement to the Water Supply Contracts**

**Presented to City Council**  
**Transportation, Technology & Infrastructure Committee**

**Department of Public Works and Engineering**  
**January 15, 2015**

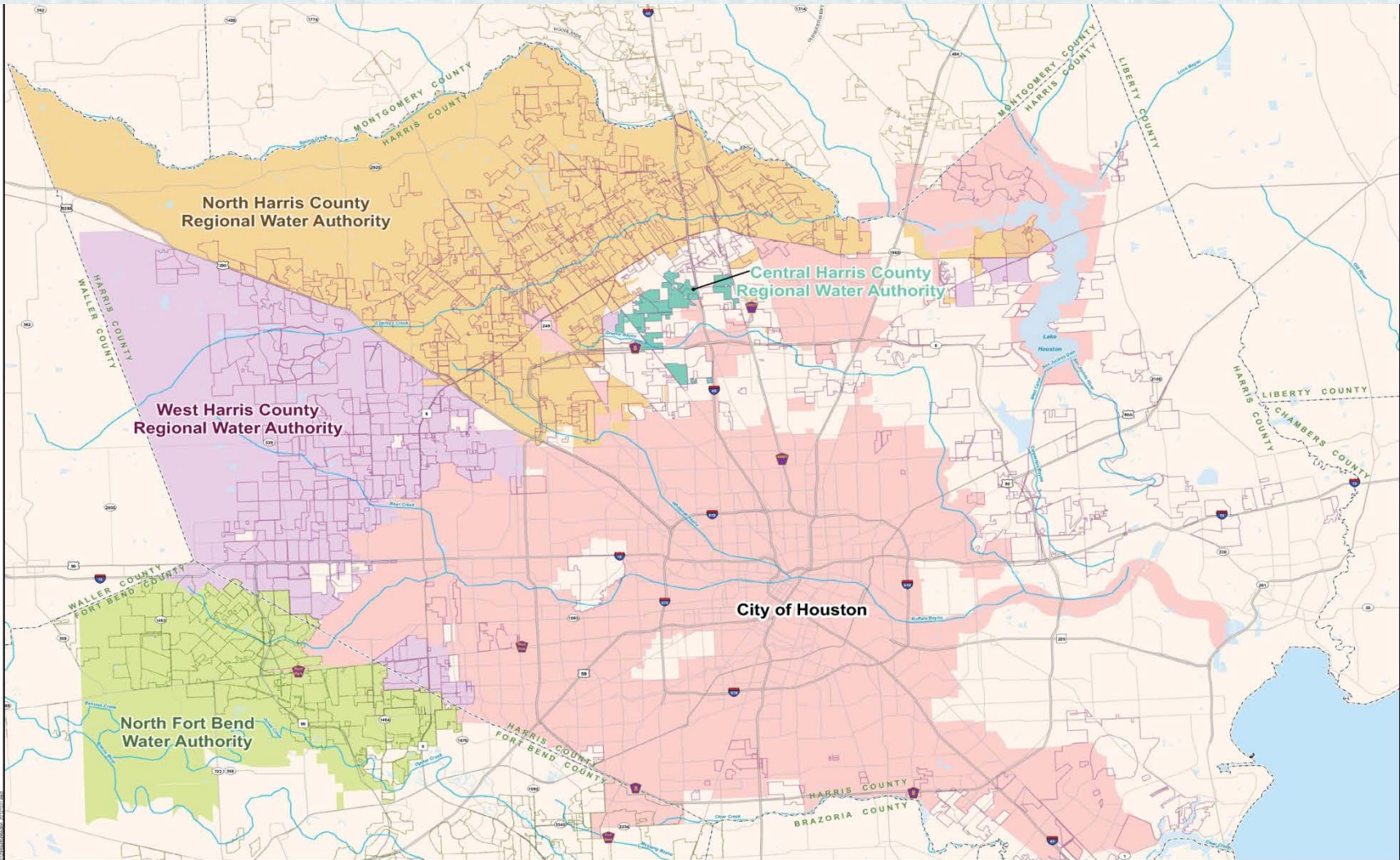
# **Water Supply Contracts**

## **Between City of Houston and Regional Water Authorities**

- COH executed an original Water Supply Contract with each of the 4 Regional Water Authorities between Dec. 2002 and July 2008
- First Supplement executed Jan. 2009 for Luce Bayou Inter-basin Transfer Project to convey untreated water from Trinity River to Lake Houston
- Second Supplement is needed for NEWPP Expansion

# NEWPP Expansion Project Area

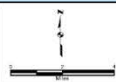
- Project Area represents COH and 4 Regional Water Authorities' boundaries; over 1300 square miles
- Project Area is in one of the fastest growing regions of the country with rapid population growth and rising water demand
- Region H 2016 RWPG projects the population within the Project Area will increase by 734,465 (19%) from 2020 to 2040
- Region H 2016 RWPG projects the water demand within the Project Area will increase by 116,086 acre-feet from 2020 to 2040
- Water provided by the Project is a critical water supply for the Project Area's population



**BROWN & GAY**  
ENGINEERS, INC.

- Montgomery County MUDs
- Fort Bend MUDs
- Harris County MUDs
- County Boundary
- Stream
- Central Harris Co Regional Water Authority (CHCRWA)
- North Harris Co Regional Water Authority (NHCRWA)
- North Fort Bend Water Authority (NFBWA)
- West Harris Co Regional Water Authority (WHCRWA)
- City of Houston

**Houston Region Water Authorities**  
October 2012



# Houston Region - Water Authorities

Brown & Gay Engineers, Inc.  
1975 Westheimer, Suite 400  
Houston, TX 77042  
Tel: 281-555-2700 Fax: 281-555-0701  
Civil engineers and surveyors

# The Significant Impact of the Project on the Project Area

- Project will serve a large population in the Project Area, producing an additional 320 MGD of surface water
- Project serves 5 participating entities which will, in turn, serve hundreds of local political subdivisions
- Project assists diverse urban and rural population (cities, towns, MUDs, PUDs, unincorporated county)
- Project necessary to meet Subsidence District conversion requirements and mitigate land subsidence
- Project importance demonstrated by prioritization in top 10% (2011 Region H Water Plan Project Prioritization)

# NEWPP Expansion Project Will Be A Collaborative Regional Effort

- City owns NEWPP Expansion, with 4 Regional Water Authorities as participants
- Estimated Project costs are approximately \$1.3 Billion, divided among the participants

	Pro-Rata Share
	Cost (%)
NHCRWA	35.313
CHCRWA	1.525
NFBWA	21.406
WHCRWA	25.756
COH	16.000
Total	100.000

# Second Supplement to Water Supply Contracts

- COH will be responsible for the procurement, design & construction of the project
- Water Authorities will have opportunities for input & provide consensus for contract prices and significant schedule changes
- The Director, in his or her reasonable discretion, determines the “Exempted” items necessary to comply with any applicable regulatory requirements related to workplace safety, public safety, operations or regulatory compliance



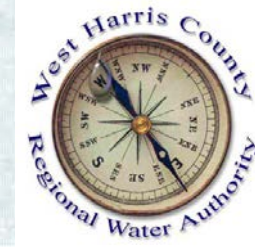


# Determining The Design-Build Method Is Appropriate For The Project

- **Criteria for determination**
  - Adequate definition
  - Time constraints
  - Competitive procurement
  - Capable management
- **Chapter 2269 of the Texas Government Code Requires Council Action**

# Plan of Actions

- One of the steps presented to the TTI in Oct. 2014
  - ✓ Formalized the Letters of Agreement
- Feb. 2015
  - ✓ Request Council approval of the Second Supplement to the Water Supply Contracts
  - ✓ Request for Council to find the alternative delivery as the appropriate approach for the project



Northeast Water Purification Plant Expansion

## **Second Supplement to the Water Supply Contract**

### **Q&A**

**Request the Committee's Recommendation of  
Approval to the Council**