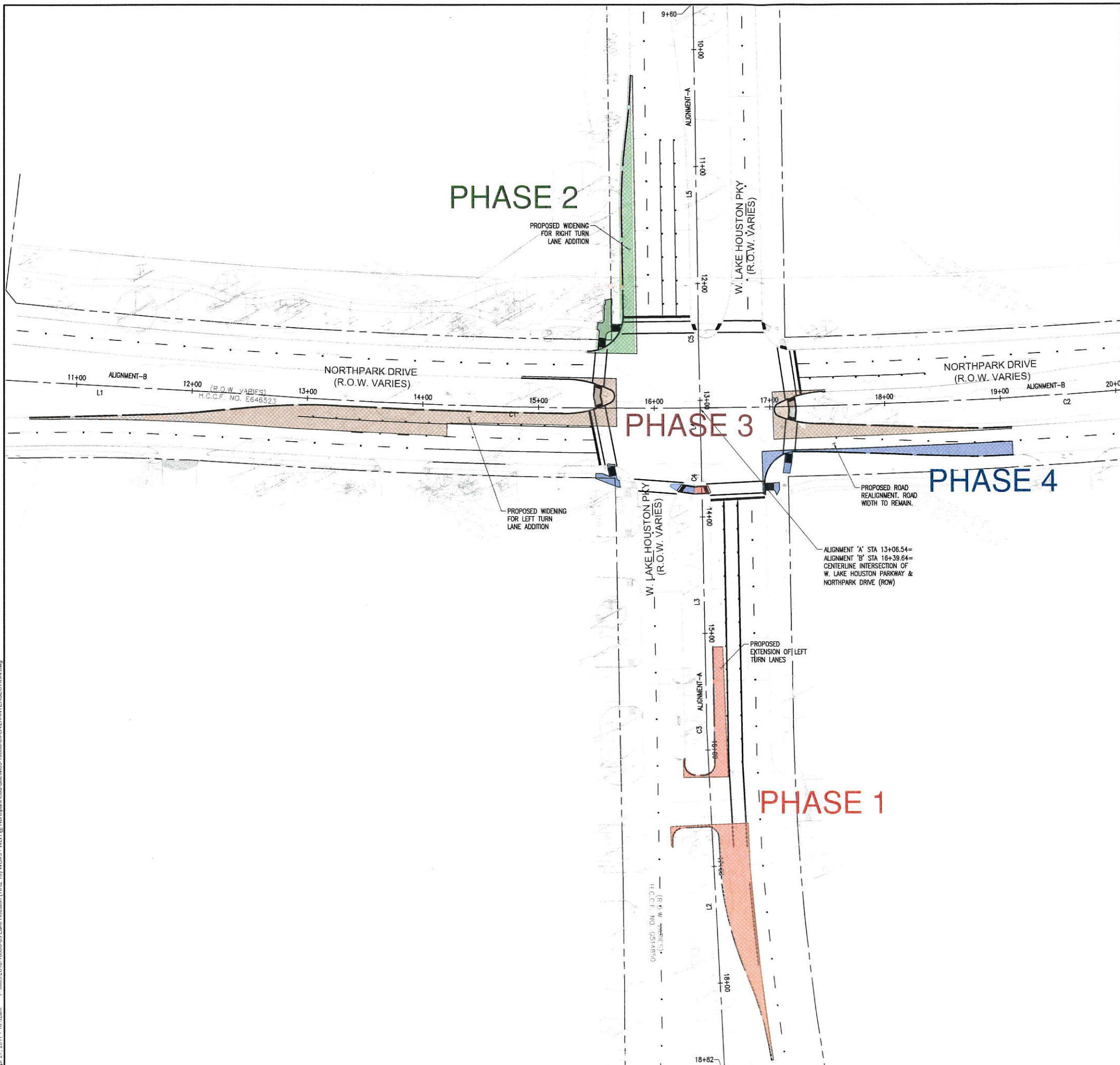


Apr 27, 2017, 10:32am P:\M03\2016\10084-03 Lake Houston (TRZ 10) W0R3 - WLH @ Northpark.Cad\Sheet\03-DVLA-INTERSECTION.dwg



BENCHMARK
 CITY OF HOUSTON MONUMENT 5870-7515, A BRASS DISK IN CONCRETE, LOCATED IN NORTH MEDIAN, AT THE INTERSECTION OF NATURAL BRIDGE DRIVE AND NORTH PARK DRIVE.
 ELEV. 75.36 FEET NAVD 1988 (CORS96)(GEOID '12A)*

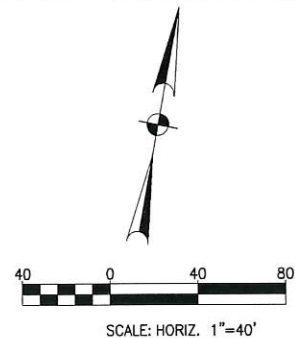
* OBSERVED BY GPS SURVEYING AND PROCESSED IN REFERENCE TO THE CORS DATED JUNE 22, 2016.

TBM #32:
 SET "X" CUT ON CONCRETE SIDEWALK LOCATED ON THE SOUTHEAST CORNER OF THE INTERSECTION OF W. LAKE HOUSTON PKWY AND NORTH PARK DR. CLOSE TO THE PEDESTRIAN CROSSING LIGHT
 ELEV. = 72.59 FT.

HORIZONTAL DATUM:
 ALL HORIZONTAL COORDINATES ARE BASED ON TEXAS STATE PLANE COORDINATE SYSTEM, SOUTH CENTRAL ZONE, NAD83. THE COORDINATES & DISTANCES SHOWN ARE SURFACE AND MAY BE CONVERTED TO GRID BY MULTIPLYING BY A SCALE FACTOR OF 0.999870017.

VERTICAL DATUM ADJUSTMENT:
 THE ELEVATION DIFFERENCE BETWEEN THE FLOODPLAIN REFERENCE MARKS (RM 070200) PUBLISHED DATUM NAVD 1988, 2001 ADJUSTMENT AND DATUM NAVD 1988, (CORS96)(GEOID '12A) IS 0.13'.

NAVD 1988, 2001 ADJ. ELEVATION
 = NAVD 1988, (CORS96)(GEOID '12A) ELEVATION - 0.13 FEET.



LEGEND

	EXISTING	PROPOSED
Curb	---	---
Edge of Pavement	---	---
Pavement Joint	---	---
R.O.W.	---	---
Curve Number		(C1)
Storm Sewer/MH	⊙	⊙
Large Diam Storm Sewer/MH	⊙	⊙
Curb Inlet/Grate Inlet	⊙	⊙
Sanitary Sewer/MH/Cleanout	⊙	⊙
Large Diam Sanitary Sewer/MH	⊙	⊙
Water Line/Fire Hydrant/Valve	⊙	⊙
Gas	⊙	⊙
Electric	⊙	⊙
Phone	⊙	⊙
Fence	⊙	⊙
Contour	90	90
Slope		12%
Top of Pavement		TP 42.25
Top of Wall		TW 42.25
Finished Grade		FG 42.25
Top of Grate		TG 42.25
Flow Line		FL 42.25
Detail Number		5
Detail Sheet Number		(C5.0)

Layout Key Notes:

① $\frac{3}{24}$ 11" CONCRETE PAVEMENT

② $\frac{2}{24}$ 4 1/2" CONCRETE SIDEWALK

NOTE:
 The location of existing underground utilities are shown in an approximate way only. The contractor shall contact the Utility Coordinating Committee at 713-223-4507 or 1-800-669-8344 and the City of Houston Department of Public Works and Engineering at 832-394-9098 a minimum of two working days prior to construction to field locate utilities. The contractor shall determine the exact location of all existing utilities before commencing work. He agrees to be fully responsible for any and all damages which might be occasioned by his failure to exactly locate and preserve any and all underground utilities.

CAUTION: UNDERGROUND GAS FACILITIES
 Locations of CenterPoint Energy main lines (to include CenterPoint Energy, Intrastate Pipeline, LLC, where applicable) are shown in an approximate location only. Service lines are usually not shown. Our signature on these plans only indicates that our facilities are shown in approximate location. It does not imply that a conflict analysis has been made. The contractor shall contact the Utility Coordinating Committee at 1-800-545-8025 or 811 a minimum of 48 hours prior to construction to have main and service lines field located.

* When Center Point Energy pipe line markings are not visible, call 713-945-8036 or 713-945-8037 (700 am to 4:30 pm). For status of line location request before excavation begins.

* When excavating within eighteen inches (18") of the indicated location of Center Point Energy facilities, all excavations must be accomplished using non-mechanized excavation procedures.

* When Center Point Energy facilities are exposed, sufficient support must be provided to the facilities to prevent excessive stress on the pipes.

* For emergencies regarding gas lines call 713-659-3002 or 713-207-4000.

The contractor is fully responsible for any damages caused by the contractor's failure to exactly locate and preserve these underground facilities.

WARNING: OVERHEAD ELECTRICAL FACILITIES
 Overhead lines may exist on the property. The location of overhead lines has not been shown on these drawings as the lines are clearly visible, but you should locate them prior to beginning any construction. These lines, Section 752, Health and Safety Code, include activities that occur in close proximity to high voltage lines, specifically any activity where pressure or things may come within six (6) feet of the overhead high voltage lines, and operating a crane, derrick, power shovel, drilling rig, pile driver, hoisting equipment, or similar apparatus within 10 feet of two overhead high voltage lines. Parties responsible for the work, including contractors, are equally responsible for the safety of construction workers under this law. This law carries both criminal and civil liability. To arrange for lines to be turned off or removed call CenterPoint Energy at 713-207-2222.

ACTIVITIES ON OR ACROSS CENTERPOINT ENERGY FEE OR EASEMENT PROPERTY
 No approval to use, cross, or occupy CenterPoint line or easement property is given, if you need to use CenterPoint property, please contact our Surveying & Right of Way Division at 713-207-6246 or 713-207-5200.

WARNING: AT&T TEXAS/SNET FACILITIES
 The locations of AT&T Texas/SNET facilities are shown in an approximate way only. The contractor shall determine the exact location before commencing work. He agrees to be fully responsible for any and all damages which might be occasioned by failure to exactly locate and preserve these underground utilities. The contractor shall call 1-800-344-8377 a minimum of 48 hours prior to construction to have underground lines field located. When excavating within eighteen inches (18") of the indicated location of AT&T Texas/SNET facilities, all excavations must be accomplished using non-mechanized excavation procedures. When boring, the contractor shall expose the AT&T Texas/SNET facilities.

When AT&T Texas/SNET facilities are exposed, the contractor will provide support to prevent damage to the conduit ducts or cables. When excavating near telephone poles the contractor shall brace the pole for support. The presence or absence of AT&T Texas/SNET underground conduit facilities does not mean that there are no direct buried cables in the area. Follow the Direct Buried Cable Procedure to locate the AT&T Texas/SNET buried cables as indicated in the AT&T Texas Research and Signature Process for AT&T Texas/SNET Facilities. Please contact the AT&T Texas Damage Prevention Manager Mr. Rosevelt Lee, Jr. at 713-567-6582 or email him at 4729@att.com, if there are questions about boring or excavating near our AT&T Texas/SNET facilities.

NO. DATE REVISIONS APP

WALTER P MOORE
 WALTER P. MOORE AND ASSOCIATES, INC.
 110 - MC KINNEY SUITE 1300
 HOUSTON, TEXAS 77010
 PHONE: 713.830.7300 FAX: 713.830.7398
 MPMA #1: M03-16085-03

Walter P. Moore and Associates, Inc.
 TPBE Firm Registration No. 1856

Heather Guillen, P.E.
 06/09/2017

LAKE HOUSTON (TRZ 10) W0R3 - WLH @ NORTH PARK
INTERSECTION IMPROVEMENTS OVERALL LAYOUT PLAN

VERIFICATION OF PRIVATE UTILITY LINES
 At least 48 hours before excavation in lower R.O.W. or easements call the Lone Star Helpline 713-223-4567. To arrange for CenterPoint Energy lines to be turned off or moved, call CenterPoint Energy at 713-207-2222. For your safety, you are required by Texas law to call 811 at least 48 hours before you dig so that underground lines can be marked. This verification does not fulfill your obligation to call 811.

Date: _____

CenterPoint Energy/Natural Gas Facilities Verification ONLY.
 (This Signature verifies that you have shown CNP Natural Gas lines correctly - not to be used for conflict verification.) (Gas service lines are not shown) Signature valid for six months.

Date: _____

CenterPoint Energy/UNDERGROUND Electrical Facilities Verification ONLY.
 (This Signature verifies existing underground facilities - not to be used for conflict verification.) Signature valid for six months.

Date: _____

Approved for AT&T Texas/SNET underground conduit facilities only. Signature valid for one year.

NOTE: CITY SIGNATURES VALID FOR ONE YEAR ONLY AFTER DATE OF SIGNATURES

CITY OF HOUSTON
 DEPARTMENT OF PUBLIC WORKS AND ENGINEERING

WATER	TRAFFIC & TRANSPORTATION
WASTEWATER	STORM WATER QUALITY
STORM	FACILITIES
STREET & BRIDGE	SIGNALS

FILE NO:	FOR CITY OF HOUSTON USE ONLY
DRAWING SCALE	
SHEET No:	4 OF 30