

SOUTHWEST LIVABLE CENTERS STUDY

PUBLIC MEETING #1

November 4, 2021



Martha Castex-Tatum
Vice Mayor Pro Tem
District K



Houston-Galveston
Area Council



PLANNING &
DEVELOPMENT
DEPARTMENT

■ AGENDA

- Meet the Team
- What is a Livable Centers Study?
- Study Area
- Existing Conditions Overview
 - Roadway Network
 - Transit
 - Bicycle Network
- Plan Process and Expectations
 - Schedule
- Get Involved!
- Next Steps
- Questions



■ Meet the Team



Aaron Tuley, AICP
Project Manager



Louis Cutaia, AICP
Deputy Project Manager



Kareem Heshmat, AICP
Project Planner



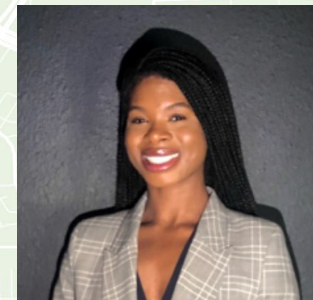
Jackson Marvel
Project Planner



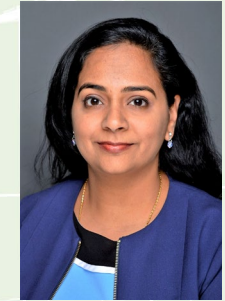
Eric Lyons, MBA



Debny Greenlee, MBA



Obiageli Onuba



Sirisha Pillalamarri,
PE, PTP



Radhika Paruchuri

Market Assessment-Workforce Development-Public Engagement

Transportation



Stakeholder Advisory Committee

The primary role of the Stakeholder Advisory Committee (SAC) is to provide input to assist the planning team in the preparation of the Livable Centers Study relevant to:

- Providing knowledge of the study area
- Identification of issues / opportunities
- Community vision and goals
- Guide plan recommendations and priorities
- Marketing ambassadors of the Plan

George Anderson	5 Corners Improvement District
Eoles Whitaker	5 Corners Improvement District
LeRon Wilson	Hiram Clarke/Ft.Bend Redevelopment
Melva Thornton	South Houston Concerned Citizens Coalition
Jonathan Brooks	LINK Houston
Paul Jefferson	South Post Oak Redevelopment
George Johnson	George E. Johnson Development
Troy Carter	Super Neighborhood 41
Ryan Presley	KIPP Mosaic
Pretta Stallworth	Houston Community College
Shelley McKinley	Madison High School Alumni Association
Cynthia Resendiz	Community Member
Deborah Barnes	Power Center
Aubin Pickens	METRO
Brandie Lockett	Houston Public Works
Alyce Coffey	Solid Waste Management
Amar Mohite	Harris County Precinct 1
Patrick Atkins	Houston Public Library
Carlene Mullins	H-GAC
Roland Lozano	TxDOT
Jillian Donatto	H-GAC Economic Development

What is a Livable Centers Study?

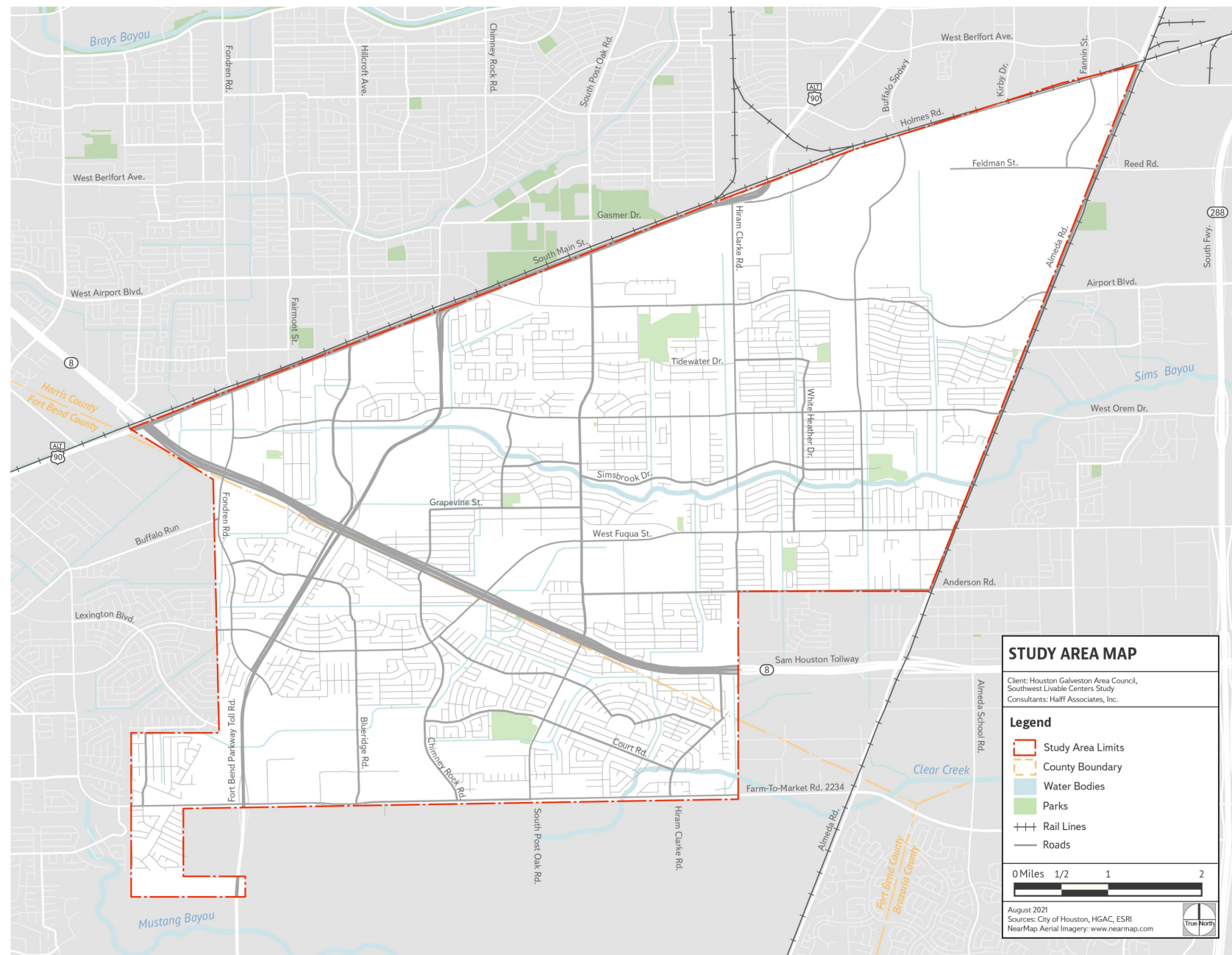
Established in 2008, the Livable Centers Program works with local communities to reimagine auto-oriented infrastructure, policies, and programs to be more multi-modal with a complementary mix of land uses.

The goals of the Livable Centers Program is to facilitate the creation of walkable, mixed-use places that provide multi-modal transportation options, improve environmental quality, and promote economic development.



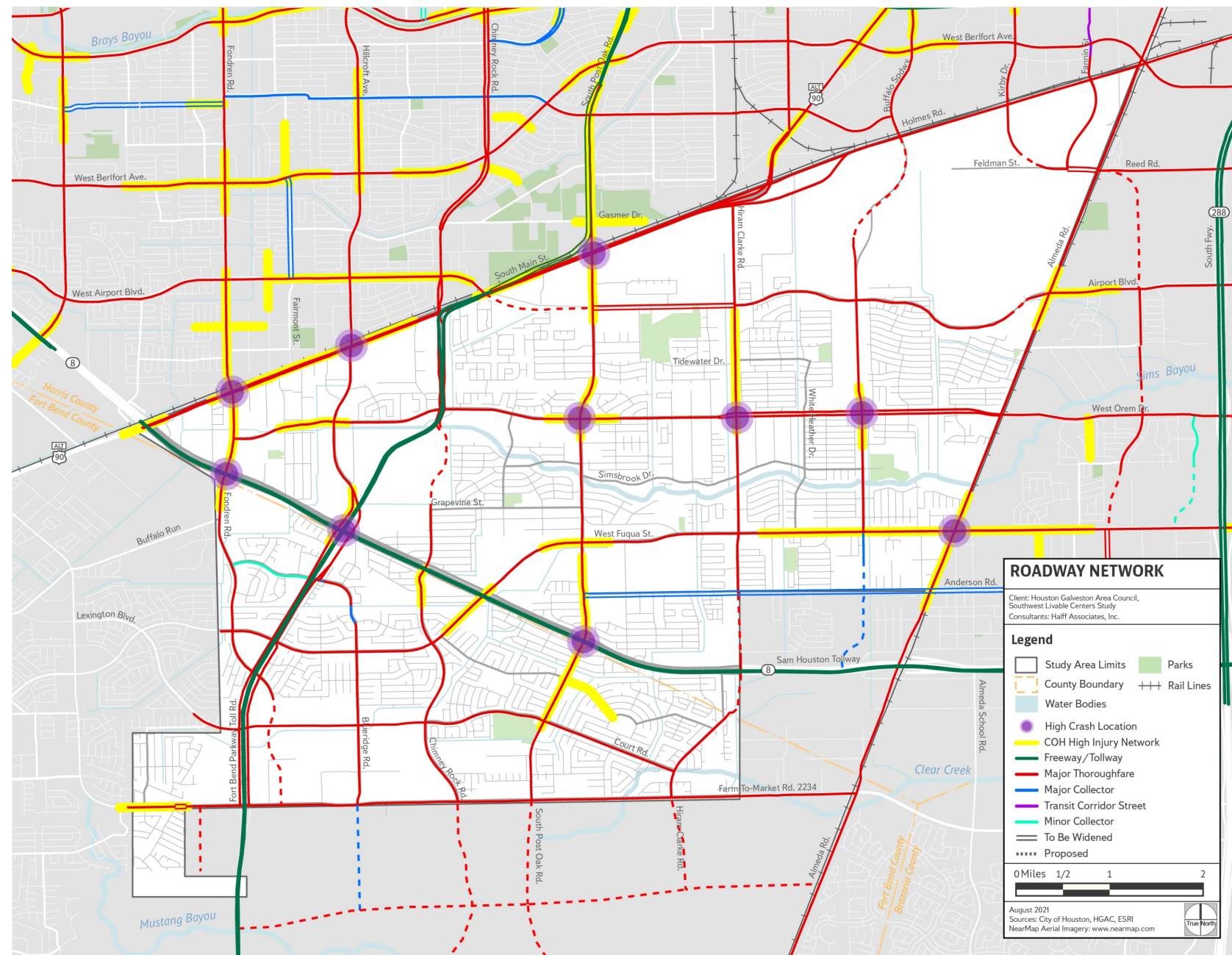
Study Area

- Located **11 miles** from Downtown Houston and **6 miles** from Texas Medical Center
- Majority of land use is older, single-family residential communities
- Major industrial businesses/warehouses located adjacent to US90A and Beltway 8
- Six grocery stores in the area with more than 65 fast food restaurants and convenience stores



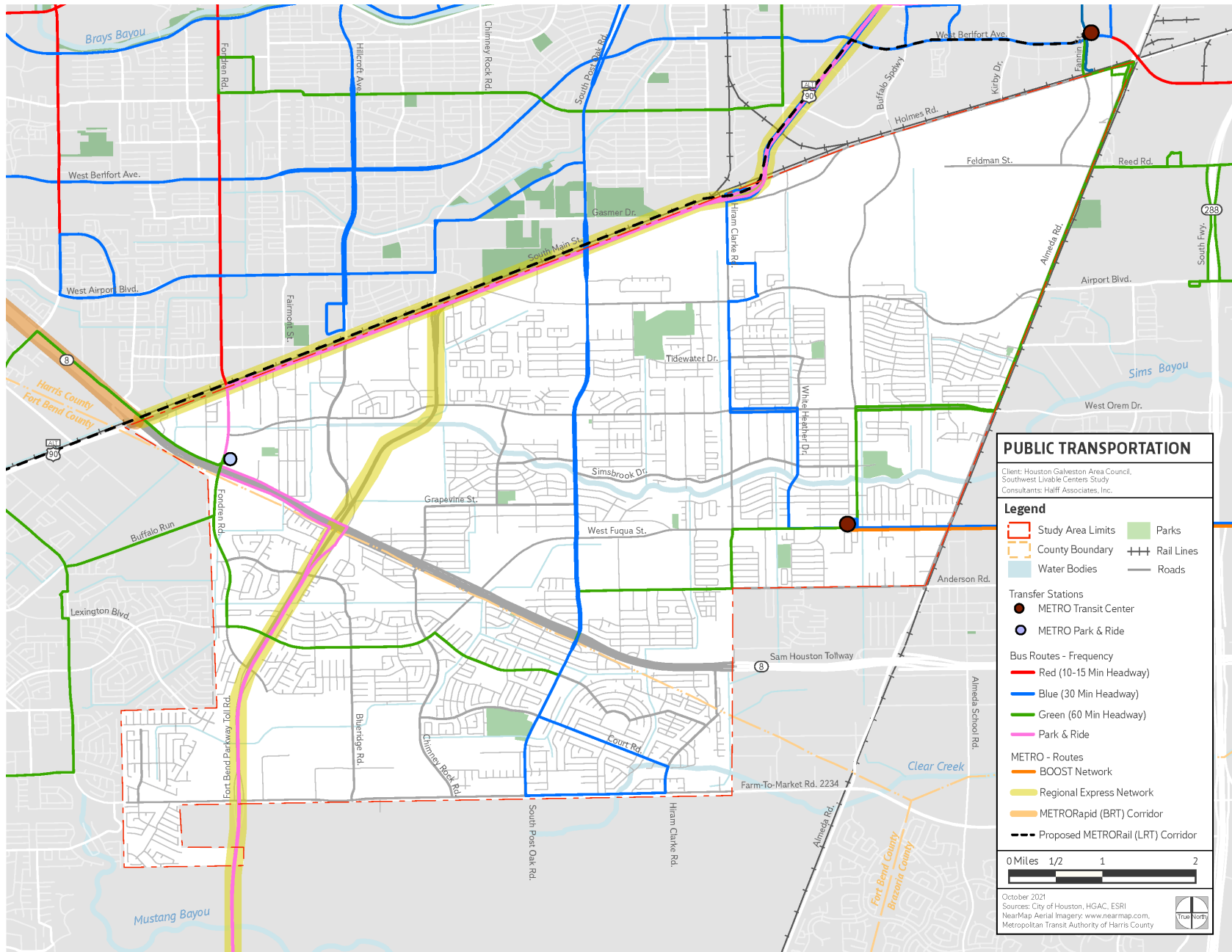
Roadway Network

- Majority of the roadway network is characterized by high-speed corridors with wide medians
- US90A, Fort Bend Tollway, UP Railroad, and Beltway 8 act as barriers to connectivity
- Residents primarily work in Downtown, Texas Medical Center and Uptown
- Speed is the top contributing factor in study area crashes
- Several corridors included in High Injury Network (COH Vision Zero)
- 68% of the roadways have a sidewalk on either one side or both sides



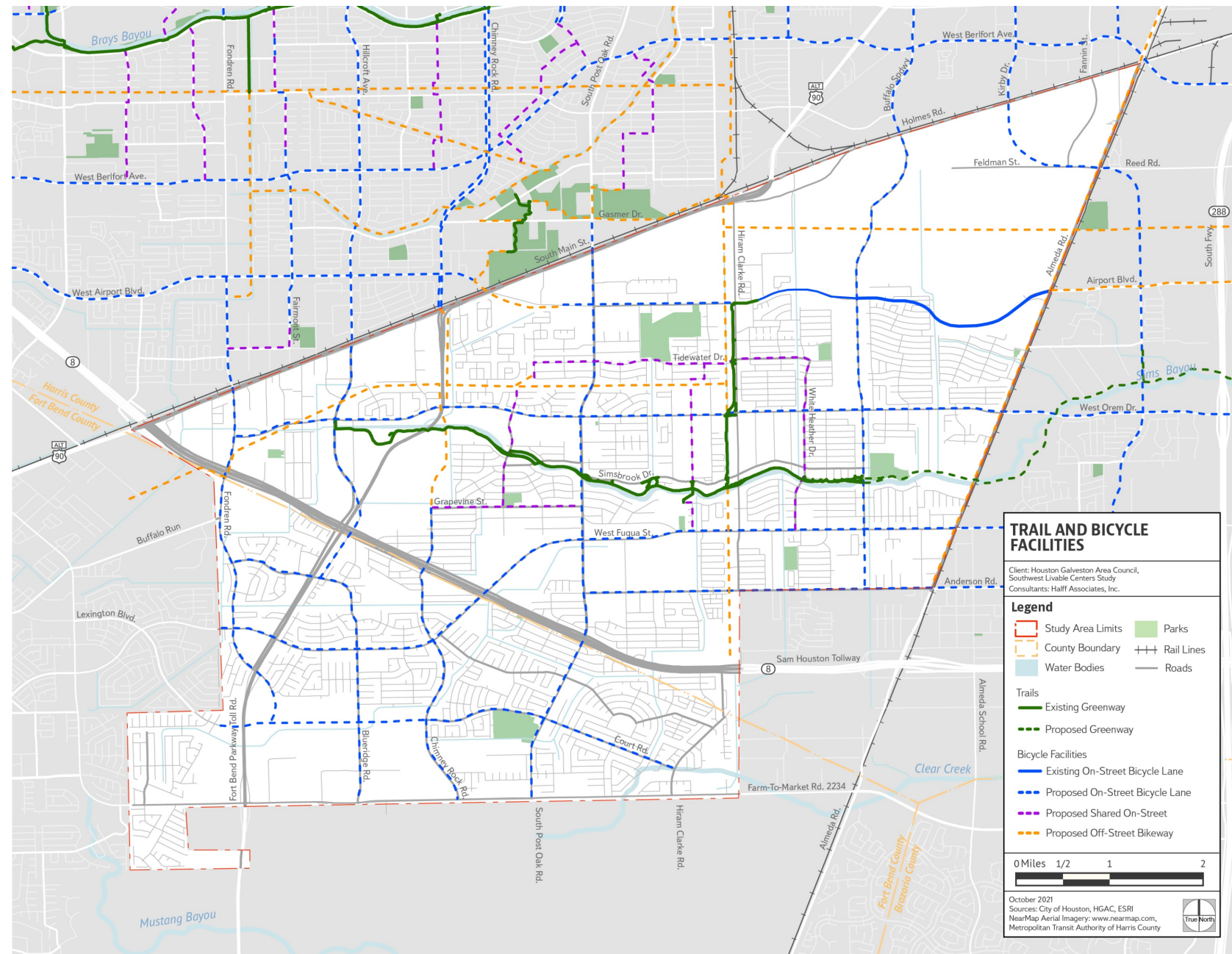
Transit Network

- Limited bus network connectivity
- Majority of routes are 30 to 60-minute headways
 - Court Rd @ S Post Oak Rd (Route 49)
- METRO NEXT
 - Boost Corridor identified along Route 54
 - Regional Express Network
 - Light Rail Corridor



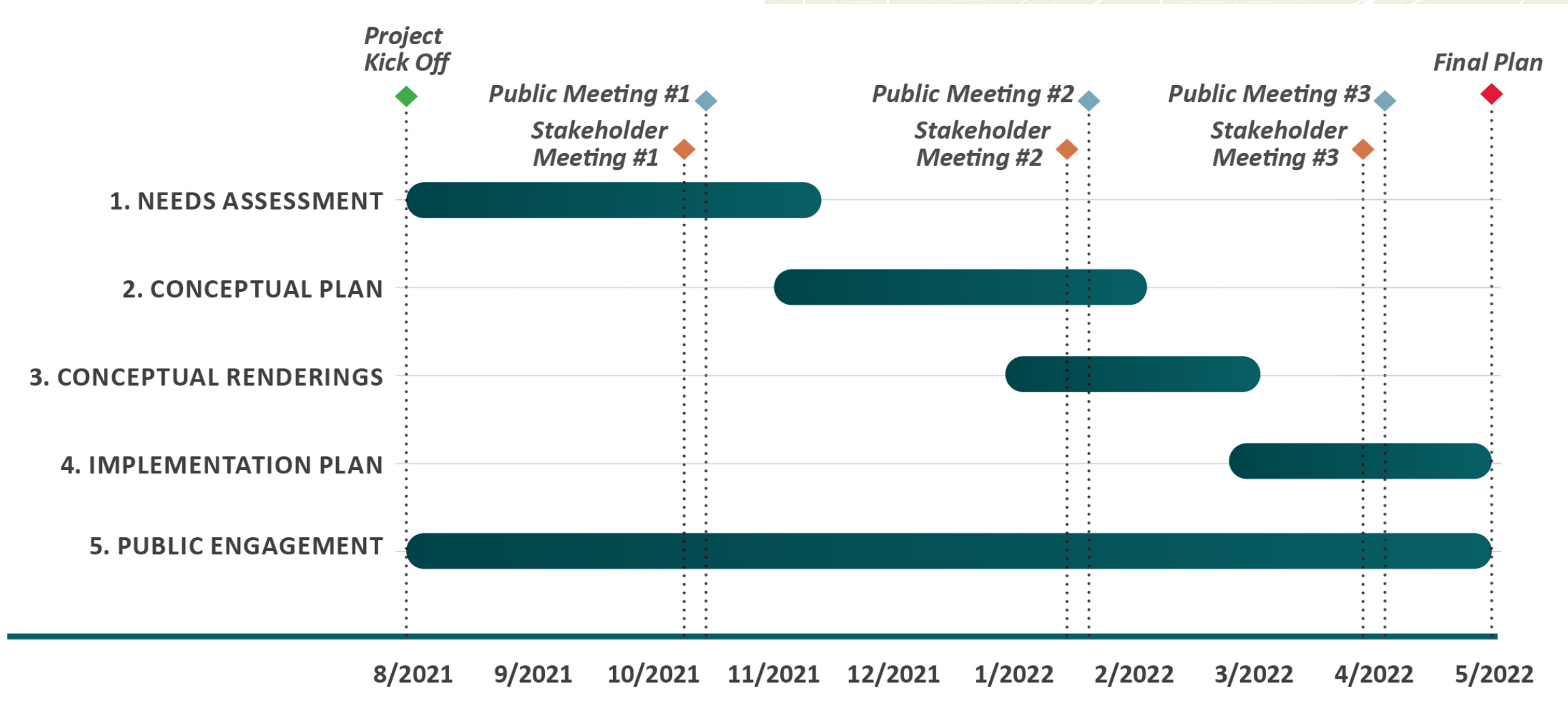
Bicycle Network

- Aside from Sims Bayou Trail and Centerpoint Trail, there is a lack of safe bicycle facilities
 - 10 miles of existing facilities
 - 43 miles of programmed/proposed facilities





Plan Process and Expectations



Get Involved!

Monitor the Project Website

- Learn about the project
- Get project updates
- View project materials

Take the Survey!

- Tell us your priorities
- Provide input on elements of the study
- Share your Vision!
- Share the survey and encourage others to participate

Next Public Meeting – January 2022

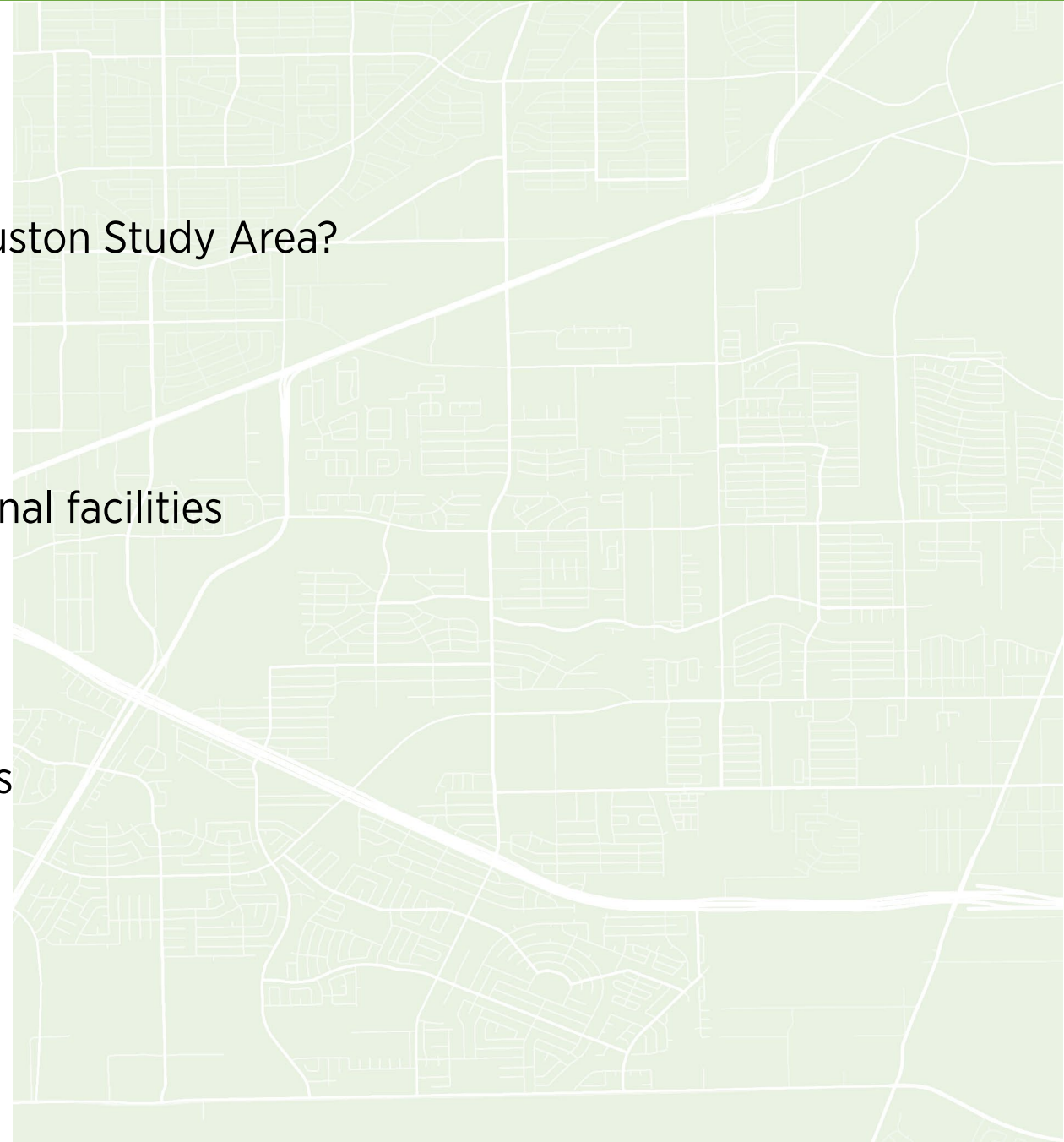
www.houstontx.gov/council/k/livable-centers-study.html



Question

What are the top priorities for the Southwest Houston Study Area?

1. More local job opportunities
2. More diverse housing options
3. More programs and activities for youth
4. More parks, public open-space, and recreational facilities
5. Education opportunities
6. Mixed-use development
7. Expand healthcare services
8. Address growth and traffic issues
9. Enhanced multi-modal transportation options



BREAK OUT EXHIBITOR SESSION

