
CERTIFICATE OF APPROPRIATENESS

Applicant: Joe Guillen, owner and Erin Wahl, agent

Property: 1917 Washington Ave, Lot 11&12, TRK10A Block 426, Baker W R NSBB Subdivision, Old Sixth Ward Historic District. 16,900 sq ft building situated on a 14,902 square foot corner lot.

Significance: Contributing Commercial Store Front built circa. 1920 in the Old Sixth Ward Historic District. Remodeled in 2016.

Proposal: Alteration – Sign

- 19.90 sq ft sign (letters at 11-1/2” height) in white satin aluminum
- Stud mounted flush into silicone filled holes – through mortar joints, not on historic brick.

Public Comment: No comment received.

Civic Association: No comment received.

Recommendation: Approval

HAHC Action: -

OLD SIXTH WARD DESIGN GUIDELINES

Pg 18 - signs

Recommendations for specific sign types are as follows:

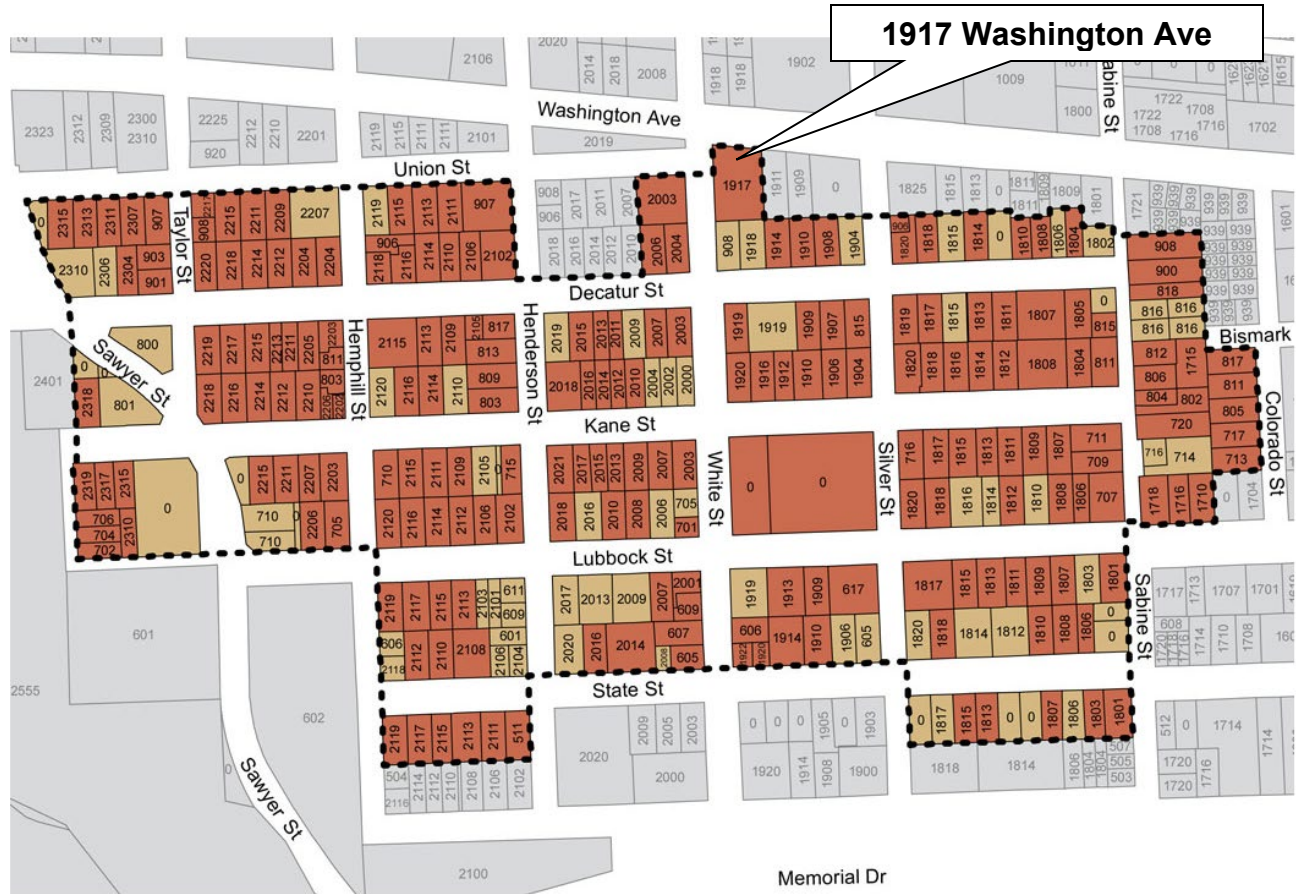
- a. Building Signage: The developer of a building may give the building a name, or the major tenant of the building may place its name on the building, according to the following specifications:
 - 1) Placement:
 - (a) Sign should be placed near the top of the building.
 - (b) Sign should be placed above upper floor windows.
 - (c) Sign is to be mounted directly on the wall surface, and the background must be the building wall.
 - (d) Sign must face a public street.
 - (e) Signage may be placed on a maximum of two building sides.
 - (f) Signs may be cut or carved.
 - (g) No roof signs are permitted.
 - 2) Dimensions:
 - (a) A maximum of 20 square feet for each sign is permitted.
 - (b) Lettering may be a maximum of 16".
 - (c) Sign may include a logo, which will be counted toward total square feet.
 - 3) Letter materials:
 - (a) Sign may be metal, stone, wood, paint, carved, or plaster. No plastic letters are permitted.

- 4) Lighting:
 - (a) Front-lit signs (illuminated by an external light source) are acceptable. No backlit or channel cut lighting permitted.
- 5) Other provisions:
 - (a) No neon signs are permitted.
 - (b) Signs shall be static; no rotating, electronic, or digital signs are appropriate.
 - (c) Inclusion of a numerical date is optional.



PROPERTY LOCATION

Old Sixth Ward



INVENTORY PHOTO – no inventory photo



**CURRENT PHOTO
(proposed sign)**



PROPOSED CONDITIONS

NOT TO EXACT SCALE

CRITERIA: CITY
THE ALLOWABLE SIZE OF A WALL SIGN CAN BE 25% OF THE ELEVATION ON WHICH IT'S INSTALLED OR 1,000SQFT; WHICHEVER IS LESS.
CRITERIA: LANDLORD
MUST GIVE APPROVAL
CRITERIA: HISTORICAL
MAX LETTER HEIGHT: 16" (DOES NOT APPLY TO LOGO)
ALLOWED SIGN: 20 (BASED ON HISTORICAL CRITERIA)
PROPOSED SIGN: 19.90 SQFT



② CHANNEL LETTERS

Description

Ⓐ LETTERS

- 3/8" ALUMINUM (CNC)
- PAINTED MP WHITE SATIN, FACE & EDGES
- 3M SCOTCHCAL ELECTROCUT GRAPHIC FILM SERIES 7725-22 MATTE BLACK VINYL STRIPE
- STUD MOUNTED FLUSH

Ⓑ LOGO

- 3/8" ALUMINUM (CNC)
- PAINTED PMS 2587C PURPLE, FACE & EDGES
- STUD MOUNTED FLUSH

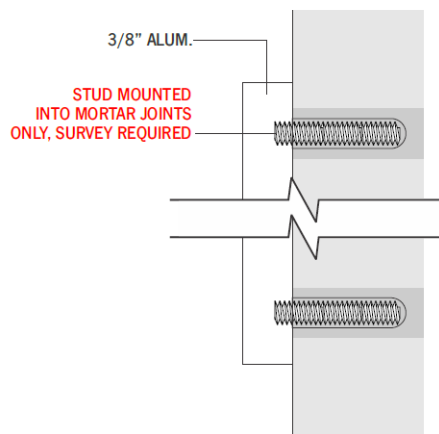


100'-0"±

30'-0"±

- Install
- STUD MOUNTED FLUSH INTO SILICONE FILLED HOLES

EXISTING SIGN REMOVAL BY OTHERS



Scale: 1/2" = 1'-0"

③ SECITON

Scale: 1:1